

# OICE-EFCA Annual Conference & A

Certification of Energy Efficiency of Building



**Research Activities**

In many fields such as microbiology, climatology, Virtual reality

**Consultancy services**

Only for exceptional projects

**Technological Activities**

Test and certification building & building materials

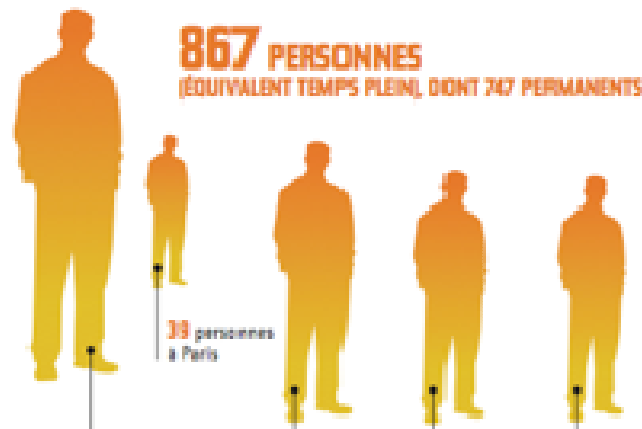
**Publications**

Norms, technical assessments, etc.

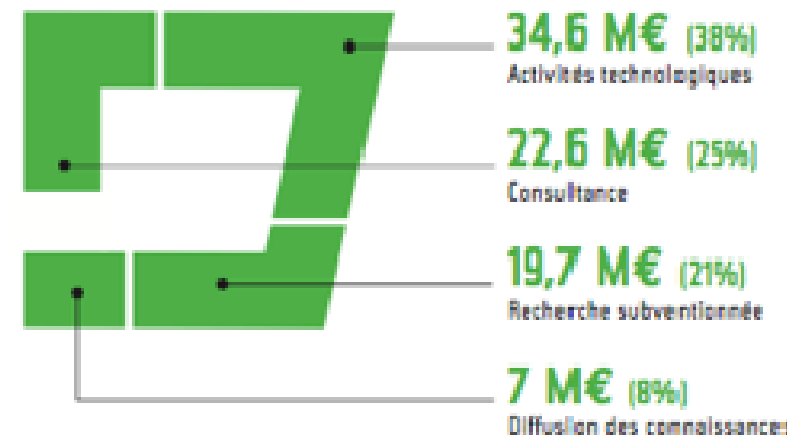
France:

- Paris
- Marne la Vallée
- Nantes
- Grenoble
- Sophia Antipolis

Effectif au 31 décembre 2008



**91,7 M€**



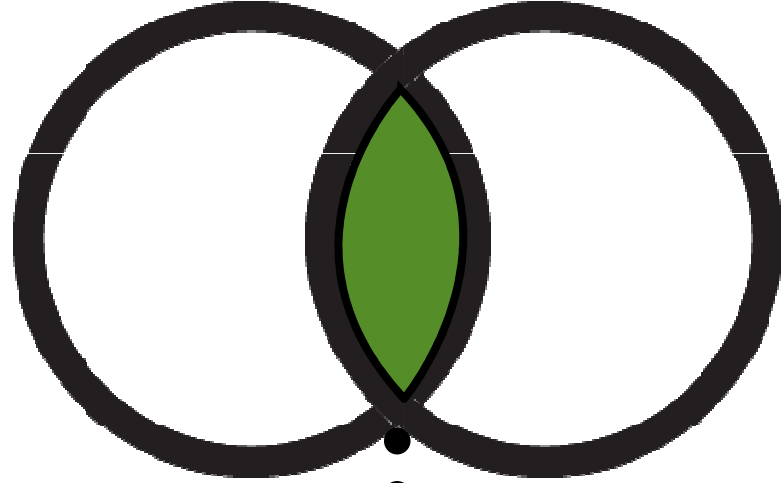


## **Sustainable Buildings and Climate Initiative**

*Promoting Policies and Practices for Sustainability*

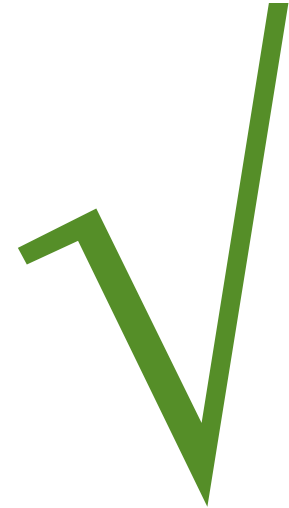
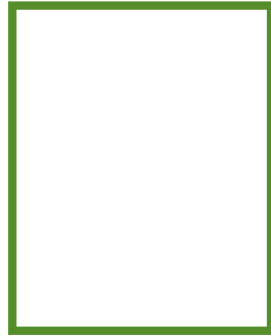


**Sustainable Building Alliance**  
*common metrics for key issues*



**PARTNERSHIP**

PUBLIC - PRIVATE



**LABELING**

**BACKGROUND**

EEL Canada  
Green Globes  
iED  
Green Globes  
BREEAM  
EcoQuantum  
Associated TACA  
JDEP A  
Verde  
EcoProfile  
GreenMark  
GoEthena



GBCS  
GBCC  
CASBEE  
EEWH  
ESGB  
HK-BEAM  
Green Mark  
TerriGriha  
Green Star  
Nabers



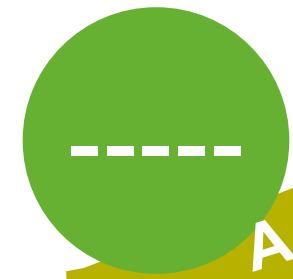
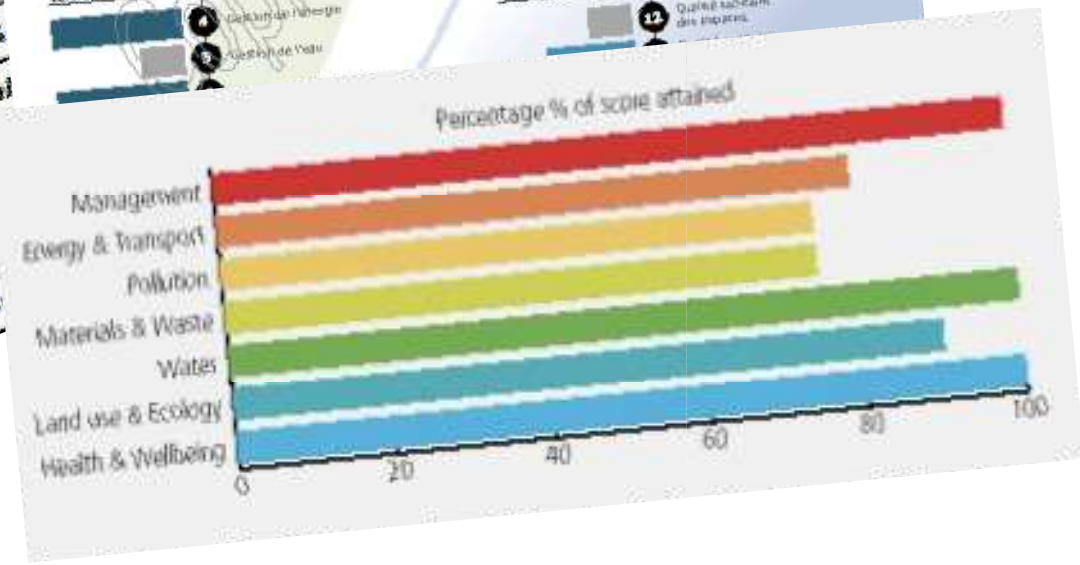
**Local / International**



**Green Facts**  
 Nustar Spa  
 Washington, DC

LEED-CI rating of  
**Gold**

Sustainable  
 Water Effi  
 Energy &  
 Material  
 Indoor  
 Qual  
 Inn  
 US



**A vs B**

**\$ € £**



**breeam**





# Sustainable Building Alliance

*common metrics for key issues*



**breeam**

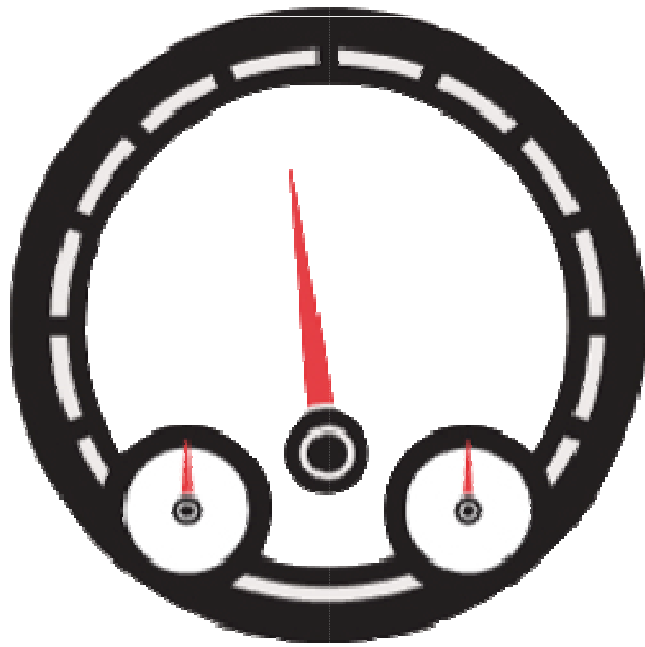


**DGNB**

Deutsche Gesellschaft für nachhaltiges Bauen e.V.  
German Sustainable Building Council

Comprehensive Assessment System for Building Environmental Efficiency  
**CASBEE** 静岡





DASHBOARD

GHG  
Energy



Sustainable Building Alliance  
*common metrics for key issues*

Waste Water

Financial Air Quality

performance



United Nations Environment Programme

المعهد الدولي للبيئة والتنمية

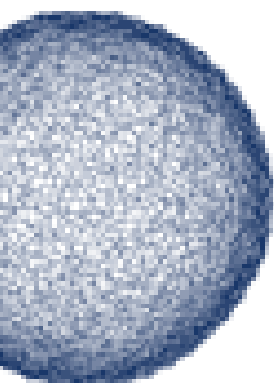
International Council for Environmental and Development

International Council for Environmental and Development



UNEP SBCI

Sustainable Buildings  
& Climate Initiative



COP15  
COPENHAGEN

UNITED NATIONS  
CLIMATE CHANGE  
CONFERENCE  
DEC 7-DEC 18  
2009



# COMMON CARBON METRIC

for Measuring Energy Use &  
Reporting Greenhouse Gas Emissions  
from Building Operations



UNEP



UNEP SBCI  
Sustainable Buildings  
& Climate Initiative

BRE /Breeam

CSTB/HQE

IVE

DGNB

ITC-CNR /Itaca

GBCA /Green Star

/DGNB

NIST

VTT

USGBC /LEED

AV /AQUA





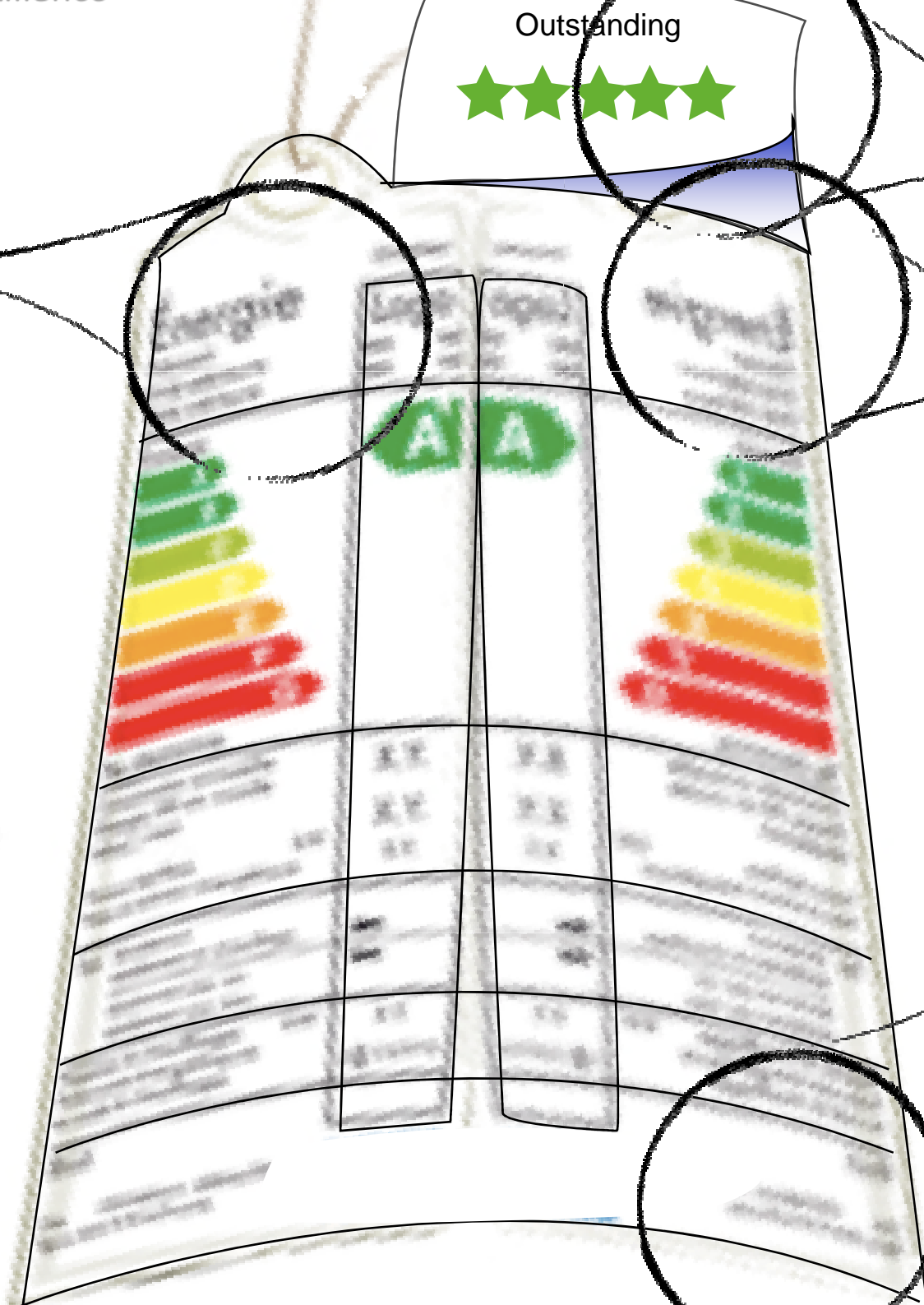
Internationally  
Defined  
frameworks

Outstanding



Ranking sys

Nationally  
calibrated  
Indicators



40 %

---

Technical

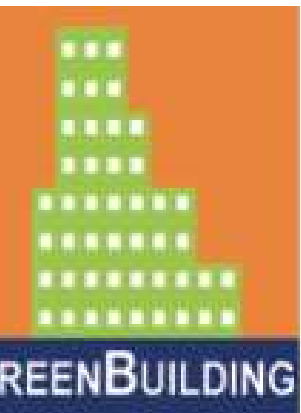
60 %

---

Political

# Sustainable Building Alliance

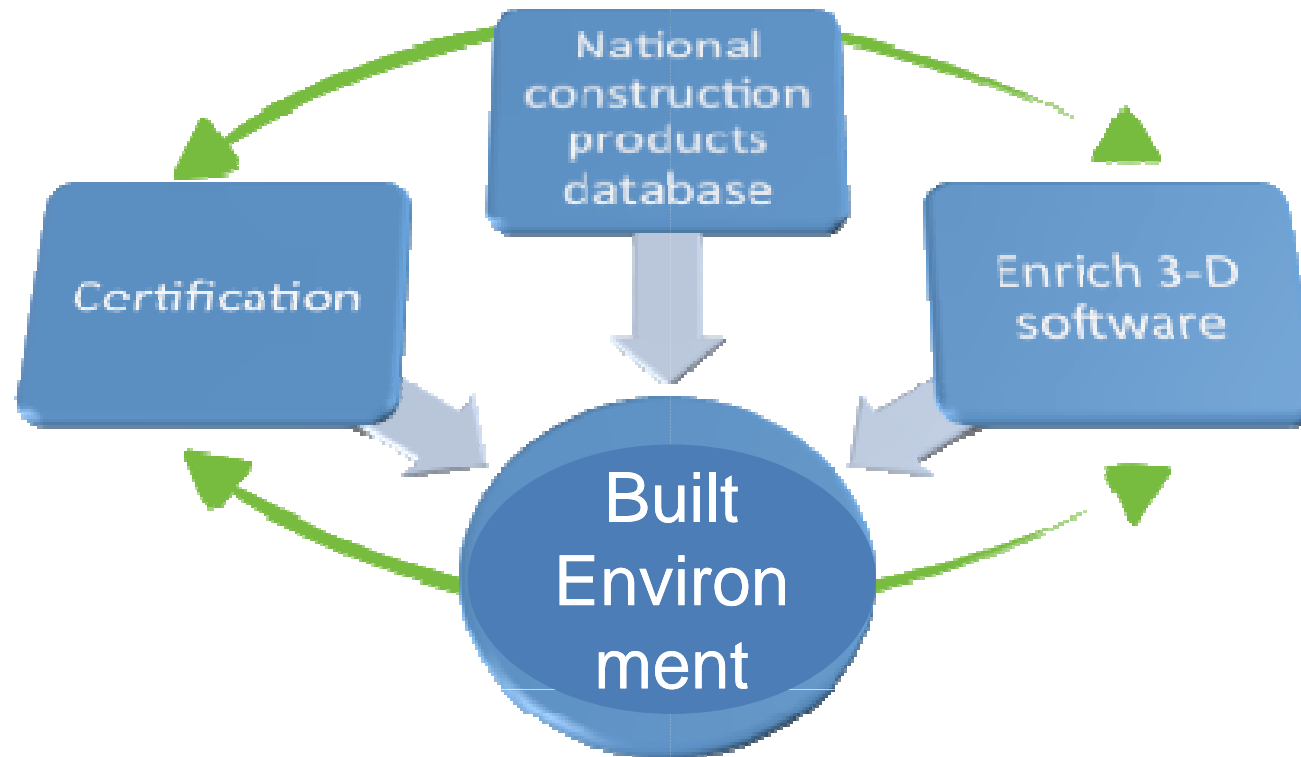
common metrics for key issues



Energy Efficiency Rating		
	Current	Potential
<i>Very energy efficient - lower running costs</i>		
91-100 <b>A</b>		
81-90 <b>B</b>		
66-80 <b>C</b>		
51-65 <b>D</b>	55	
36-50 <b>E</b>		
21-35 <b>F</b>		
1-20 <b>G</b>		
<i>Not energy efficient - higher running costs</i>		
UK 2005	Directive 2002/91/EC	

Environmental Impact Rating		
	Current	Potential
<i>Very environmentally friendly - lower CO<sub>2</sub> emissions</i>		
93-100 <b>A</b>		
81-92 <b>B</b>		
66-80 <b>C</b>		
51-65 <b>D</b>		
36-50 <b>E</b>	50	
21-35 <b>F</b>		
1-20 <b>G</b>		
<i>Not environmentally friendly - higher CO<sub>2</sub> emissions</i>		
UK 2005	Directive 2002/91/EC	





# Sustainable Building Alliance

common metrics for key issues



[www.sballiance.org](http://www.sballiance.org)

<http://www.sballiance.biz/sballiancega/EFCA.html>