

UFFICI PER LA GUARDIA DI FINANZA NELLA CASERMA ERIO BERTARINI DI BOLOGNA

BOLOGNA - 20 MARZO 2019
ALBERTO MUFFATO





UFFICI PER LA GUARDIA DI FINANZA NELLA CASERMA BERTARINI DI BOLOGNA

Inquadramento

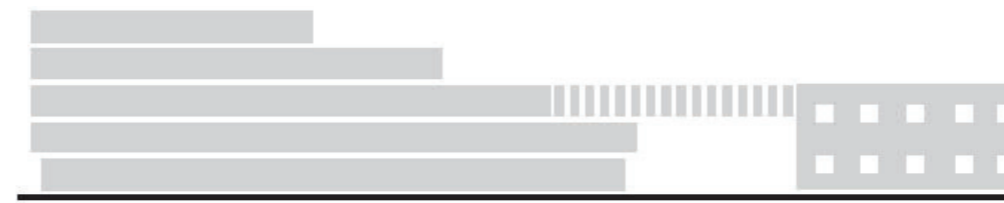


UFFICI PER LA GUARDIA DI FINANZA NELLA CASERMA BERTARINI DI BOLOGNA

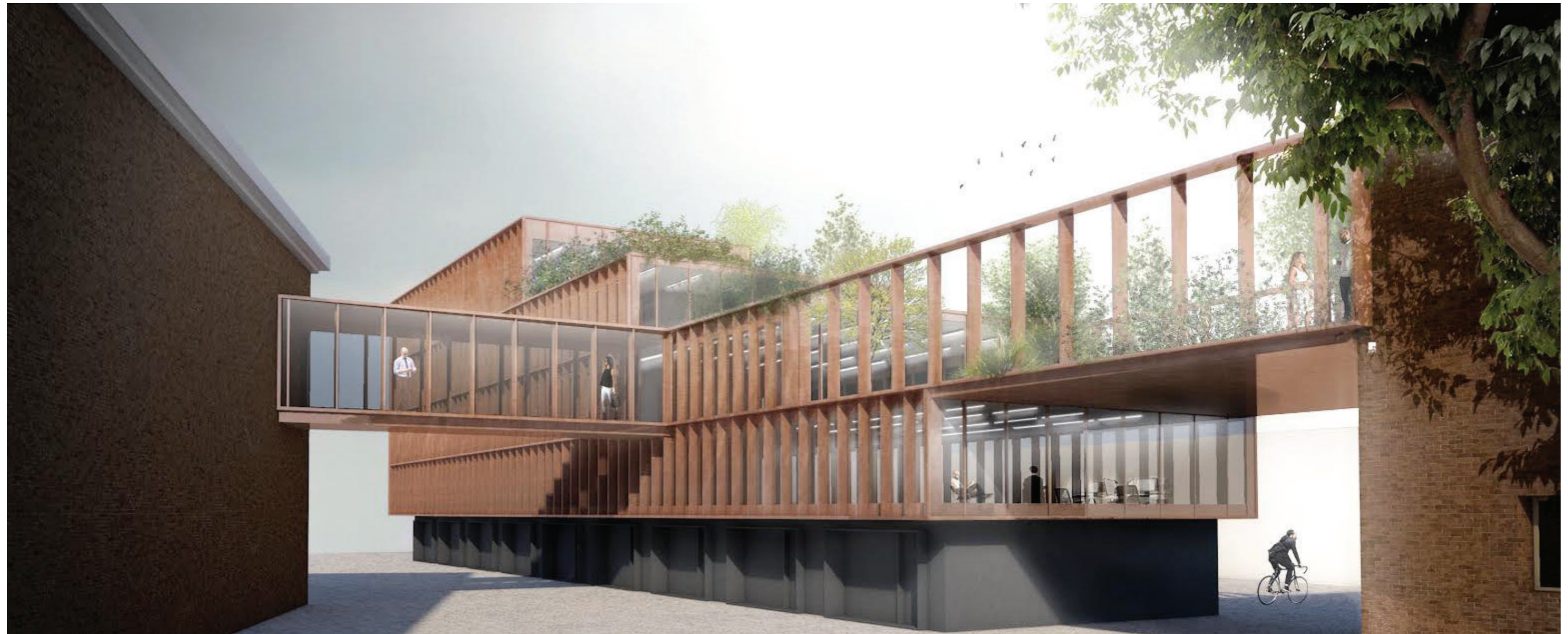
Offerta tecnica - maggio 2018



Proposta a base di gara

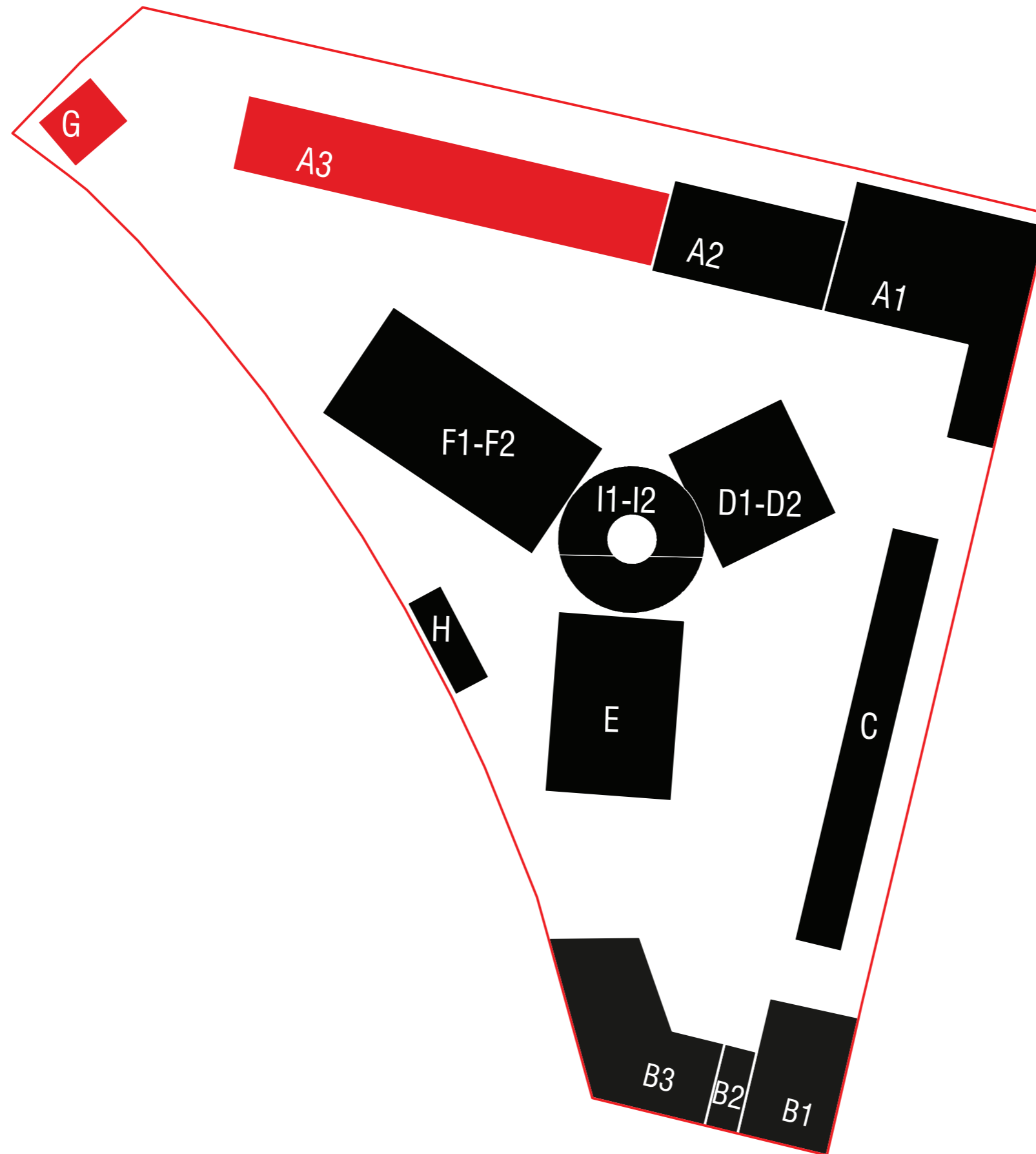


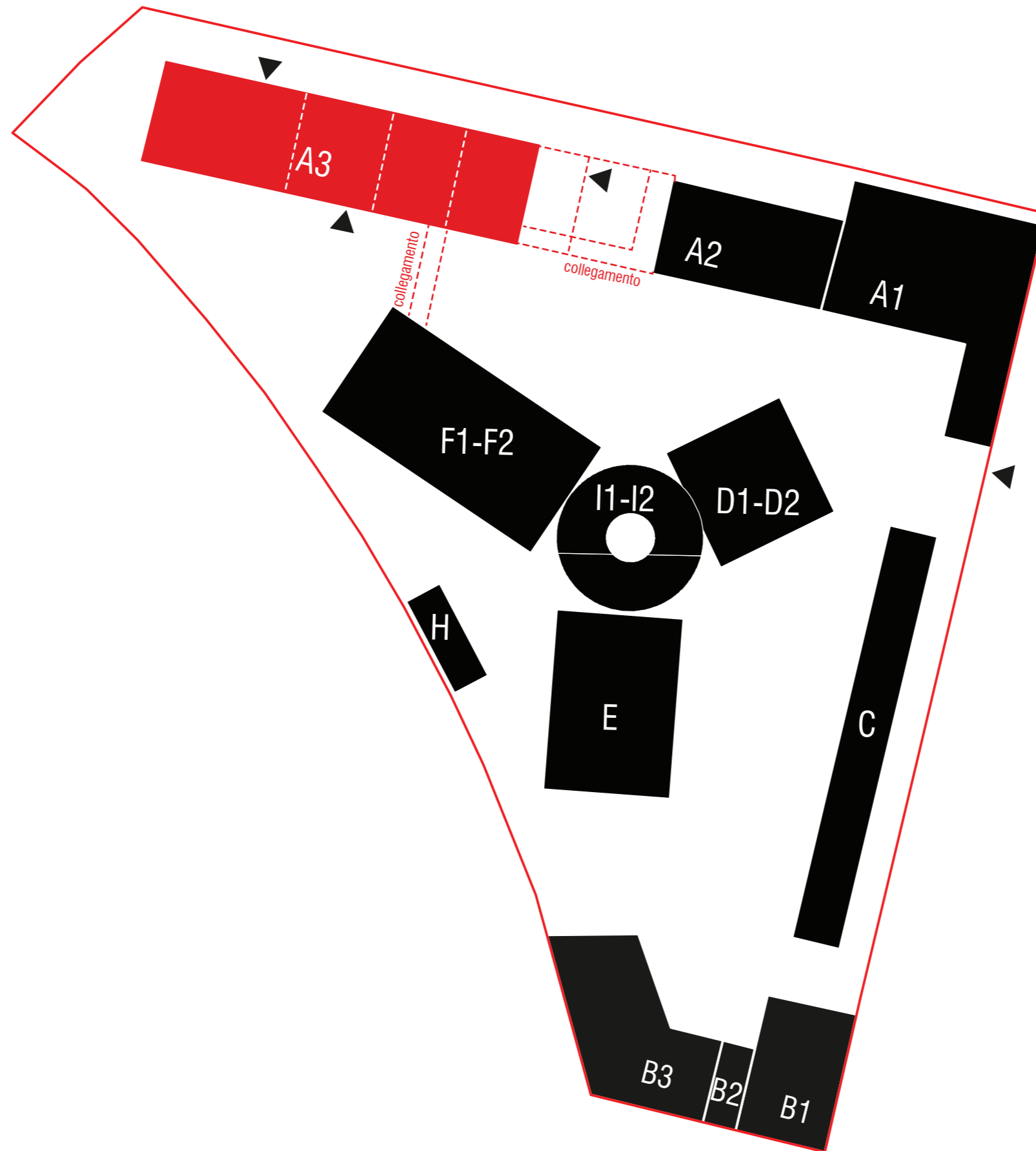
Proposta migliorativa



UFFICI PER LA GUARDIA DI FINANZA NELLA CASERMA BERTARINI DI BOLOGNA

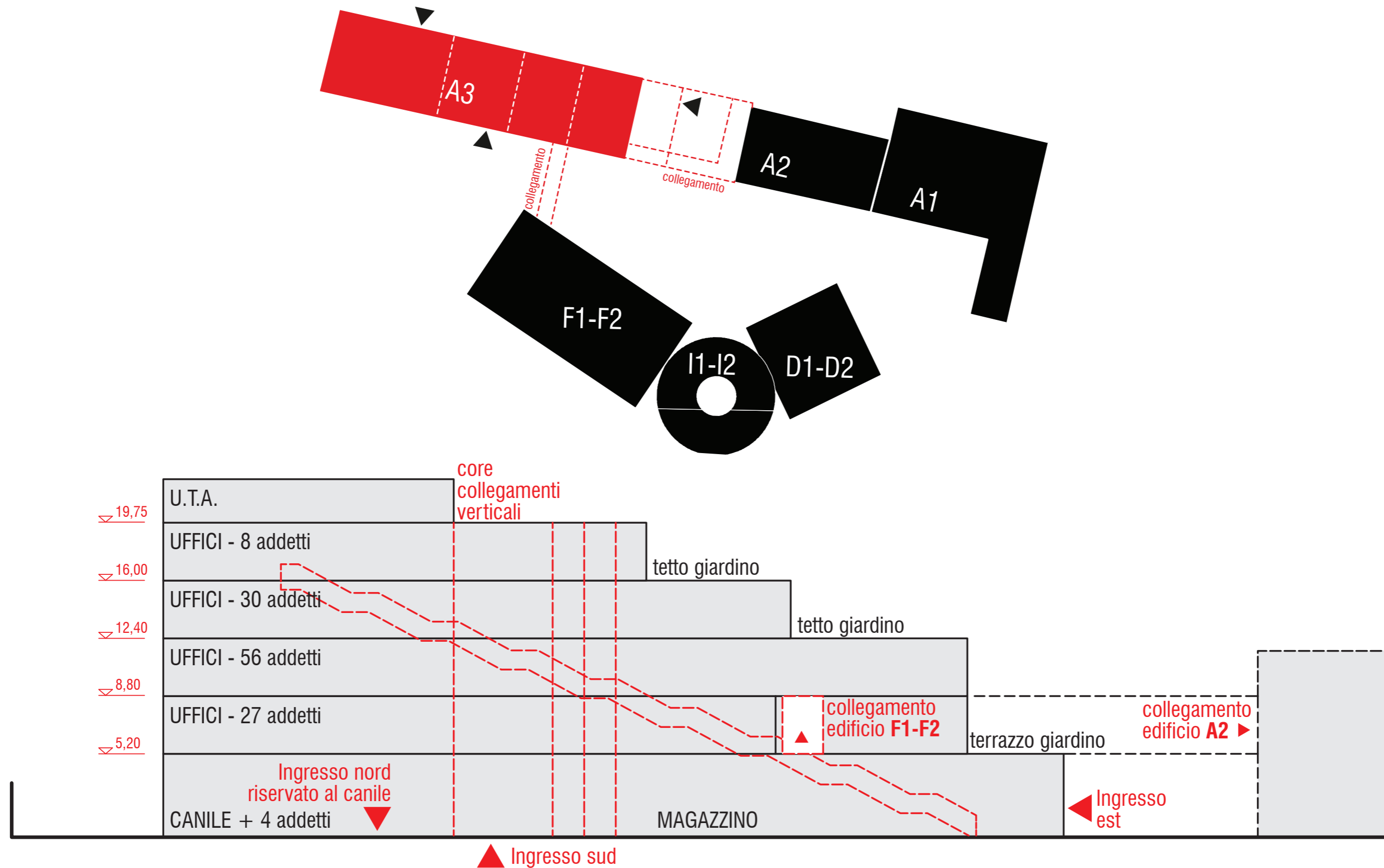
Stato di fatto





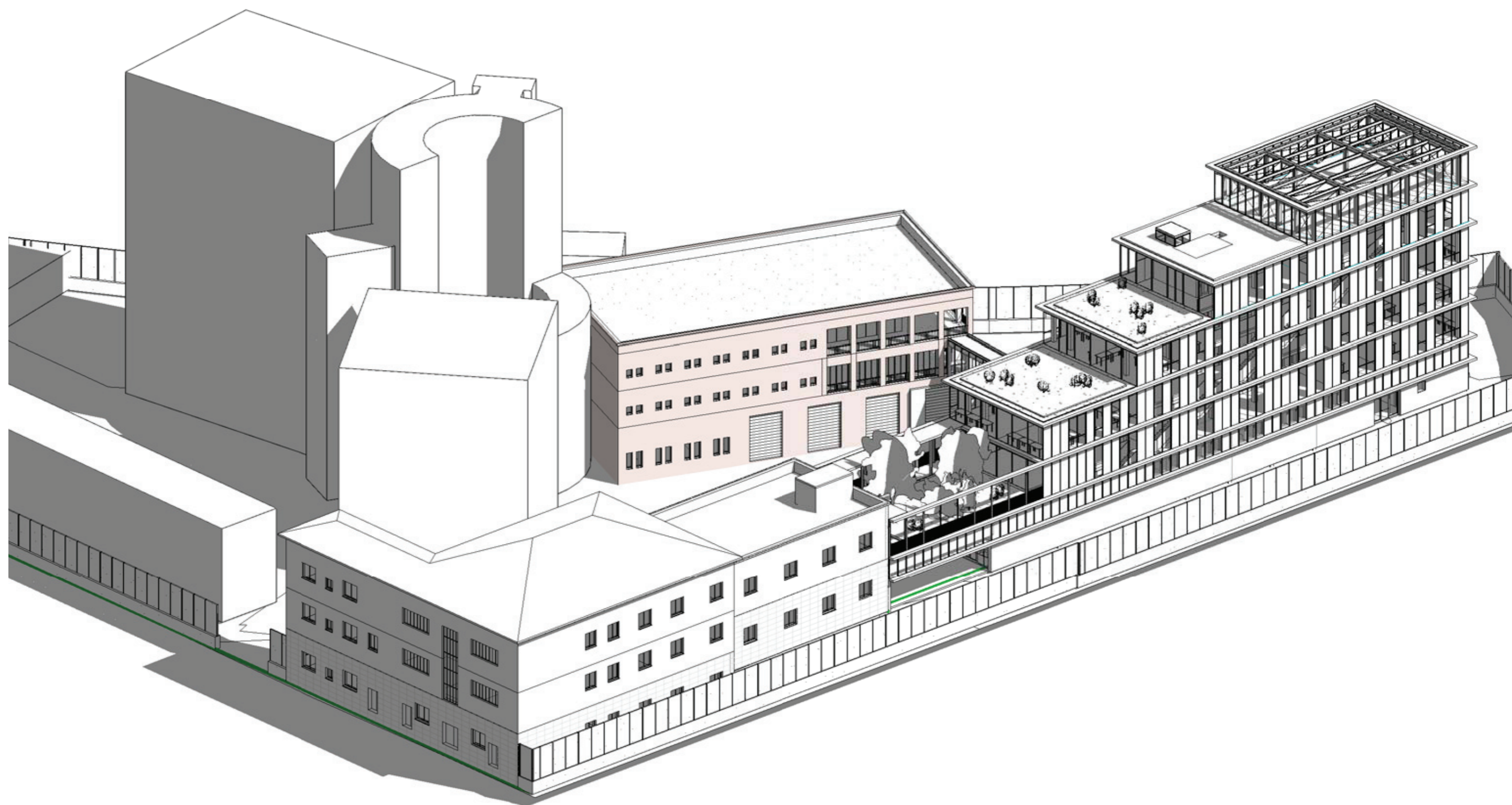
UFFICI PER LA GUARDIA DI FINANZA NELLA CASERMA BERTARINI DI BOLOGNA

Assetto planivolumetrico

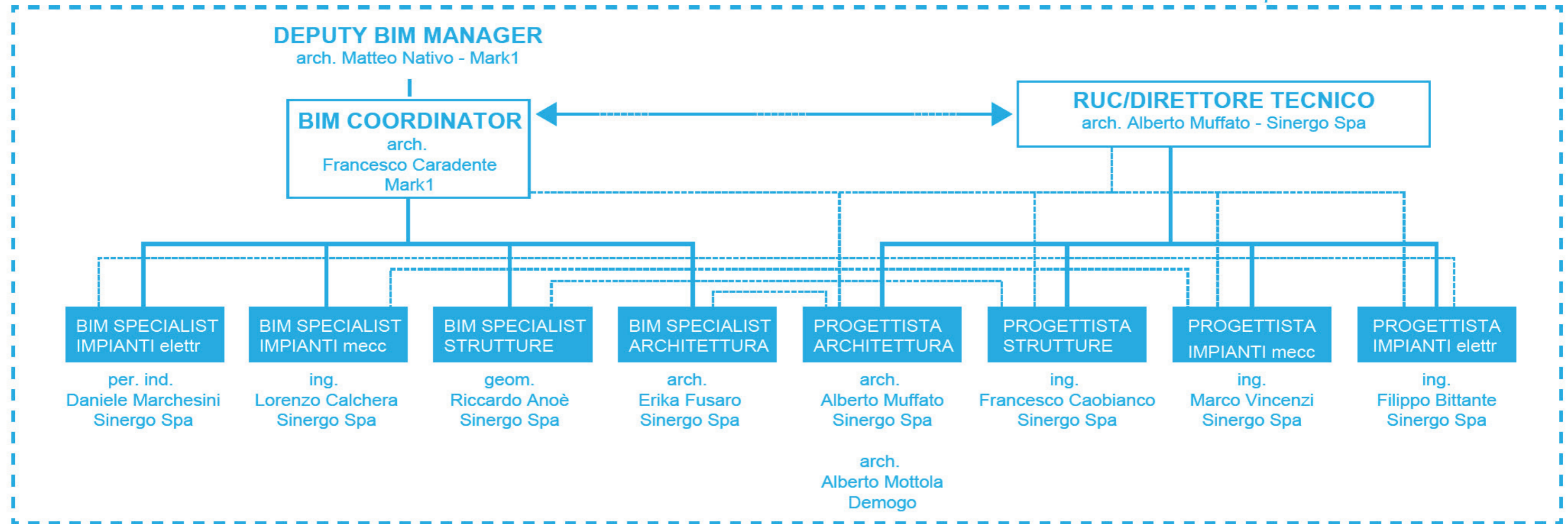


UFFICI PER LA GUARDIA DI FINANZA NELLA CASERMA BERTARINI DI BOLOGNA

Veduta di insieme

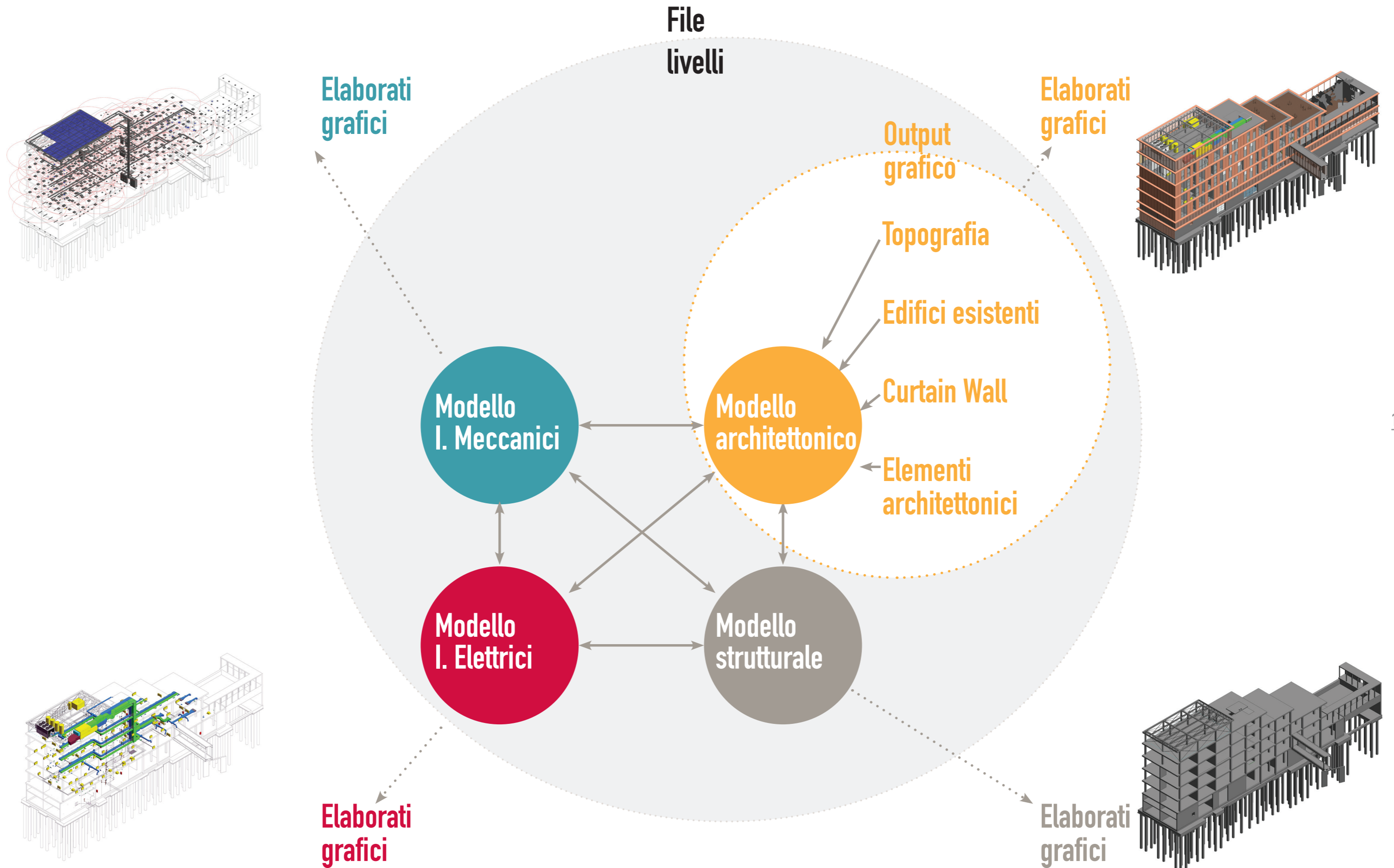


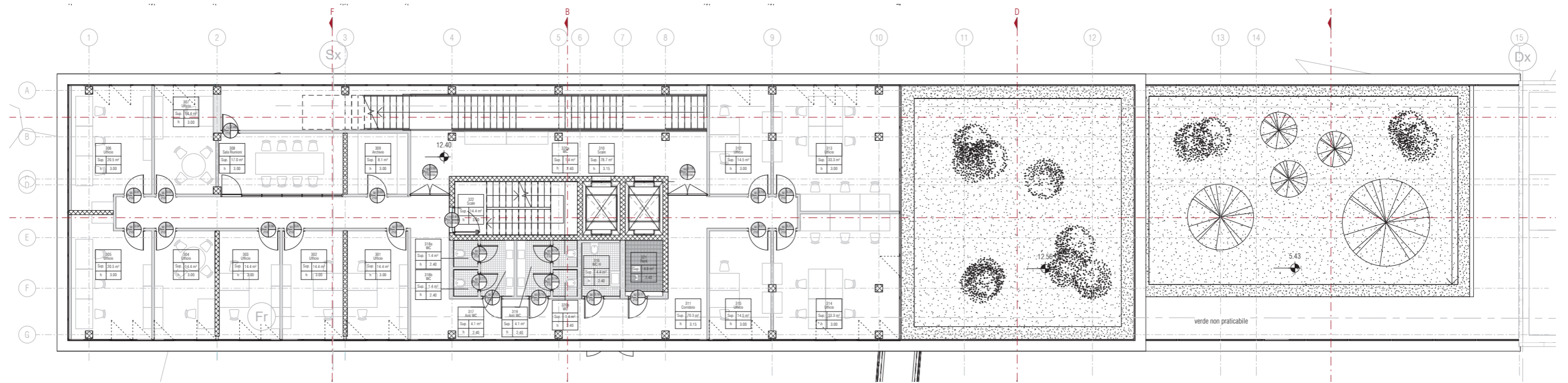
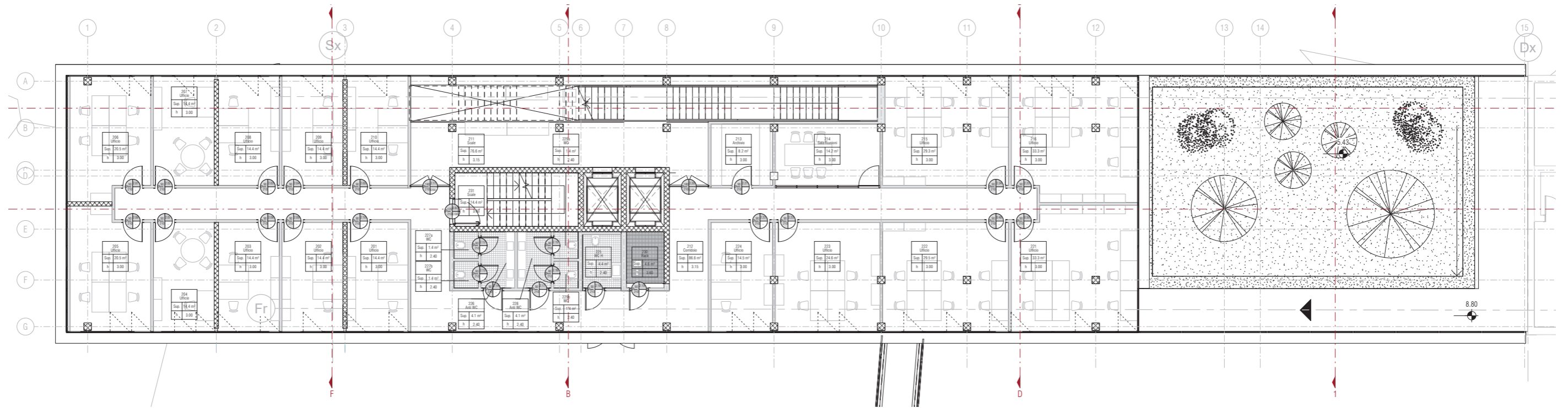
#COMMESSA: Ampliamento Caserma Bertarini

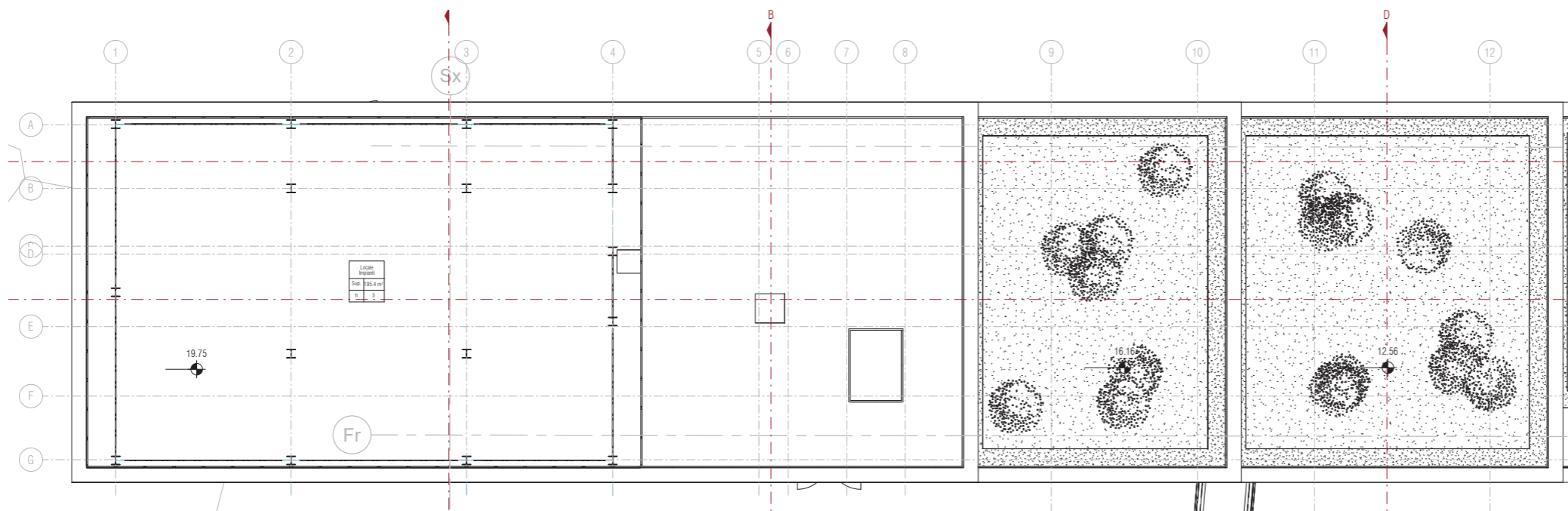
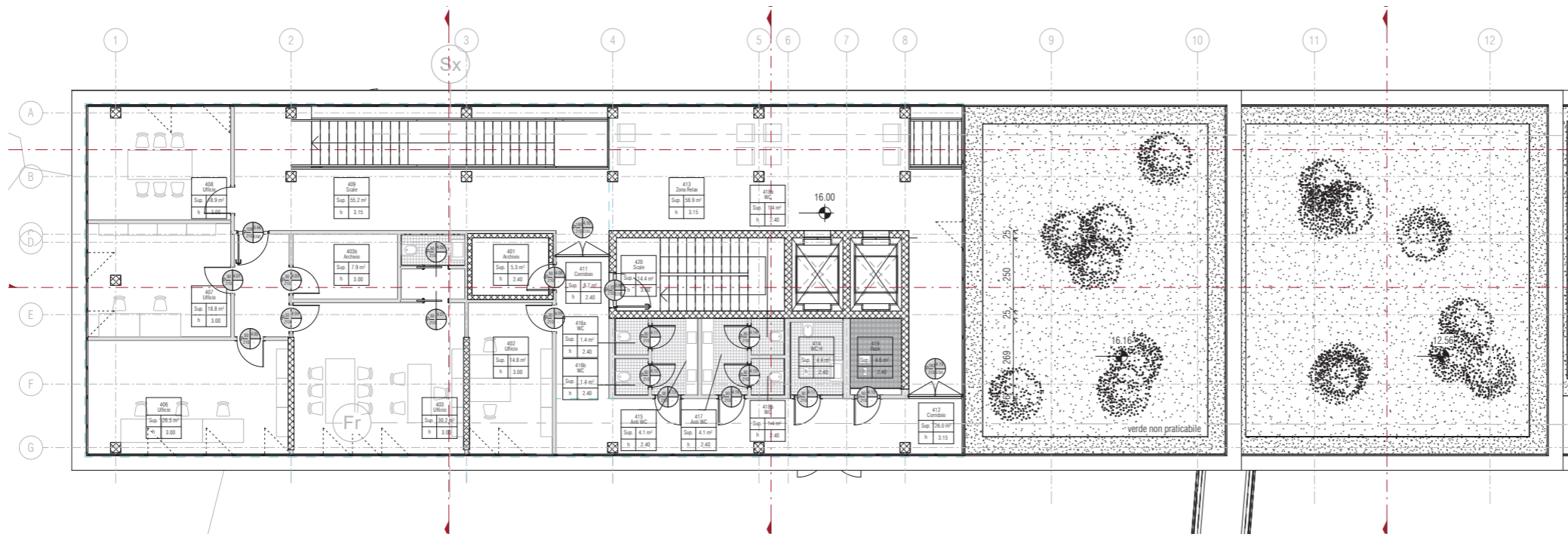


UFFICI PER LA GUARDIA DI FINANZA NELLA CASERMA BERTARINI DI BOLOGNA

Organizzazione dei modelli

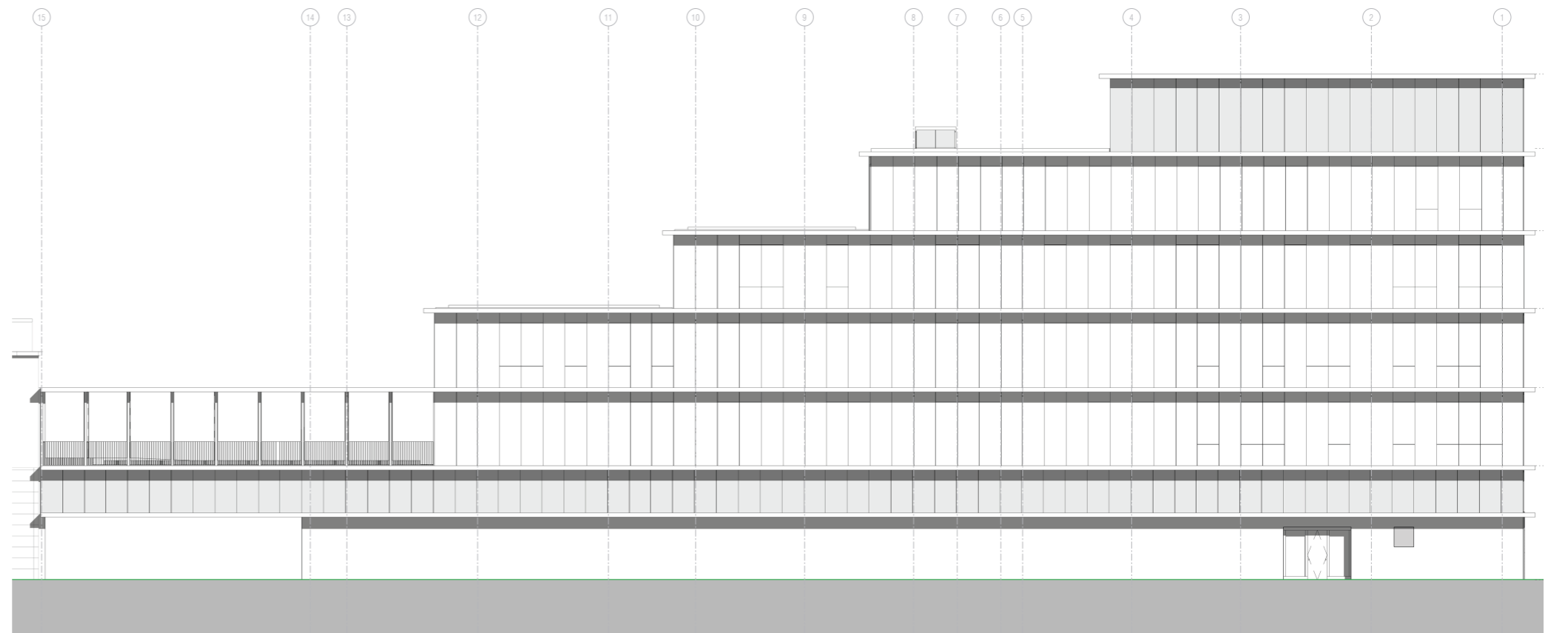
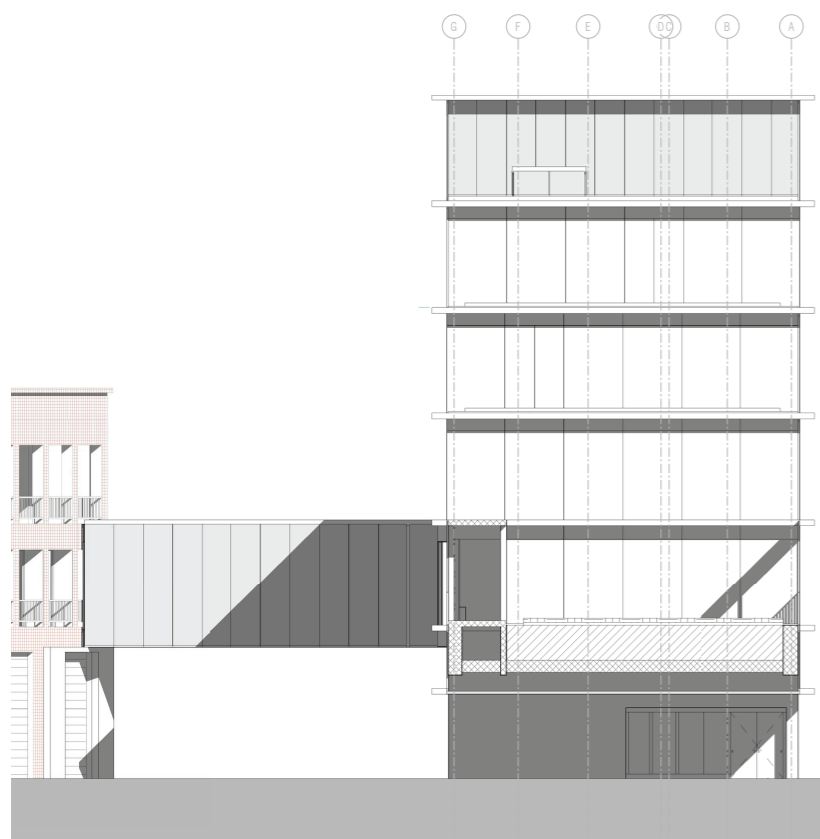
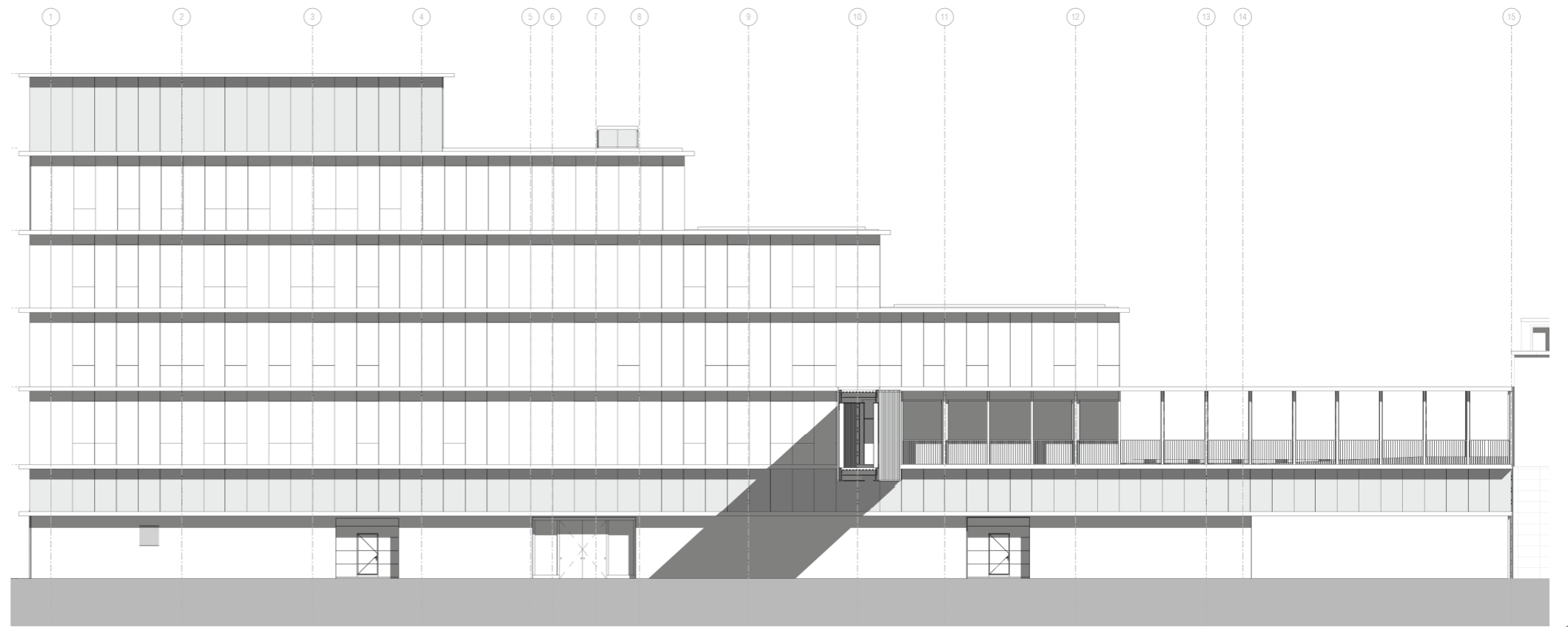
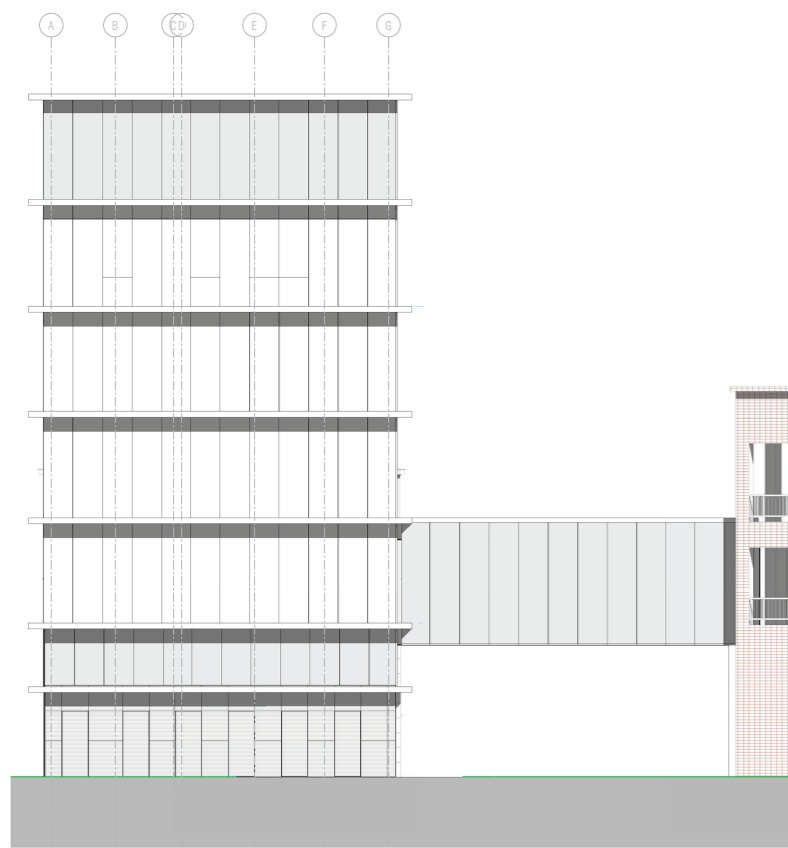


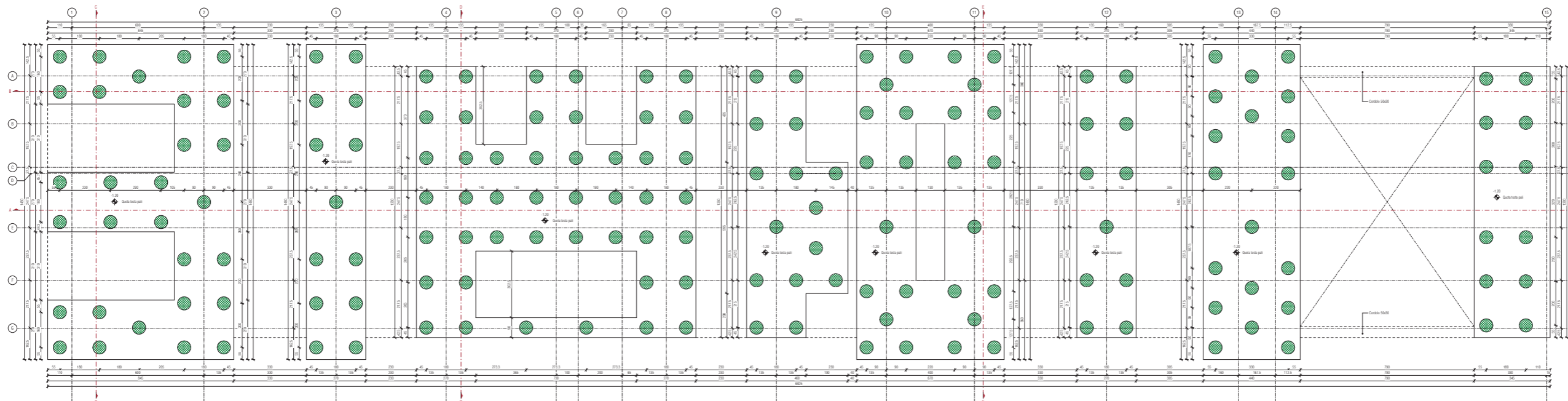
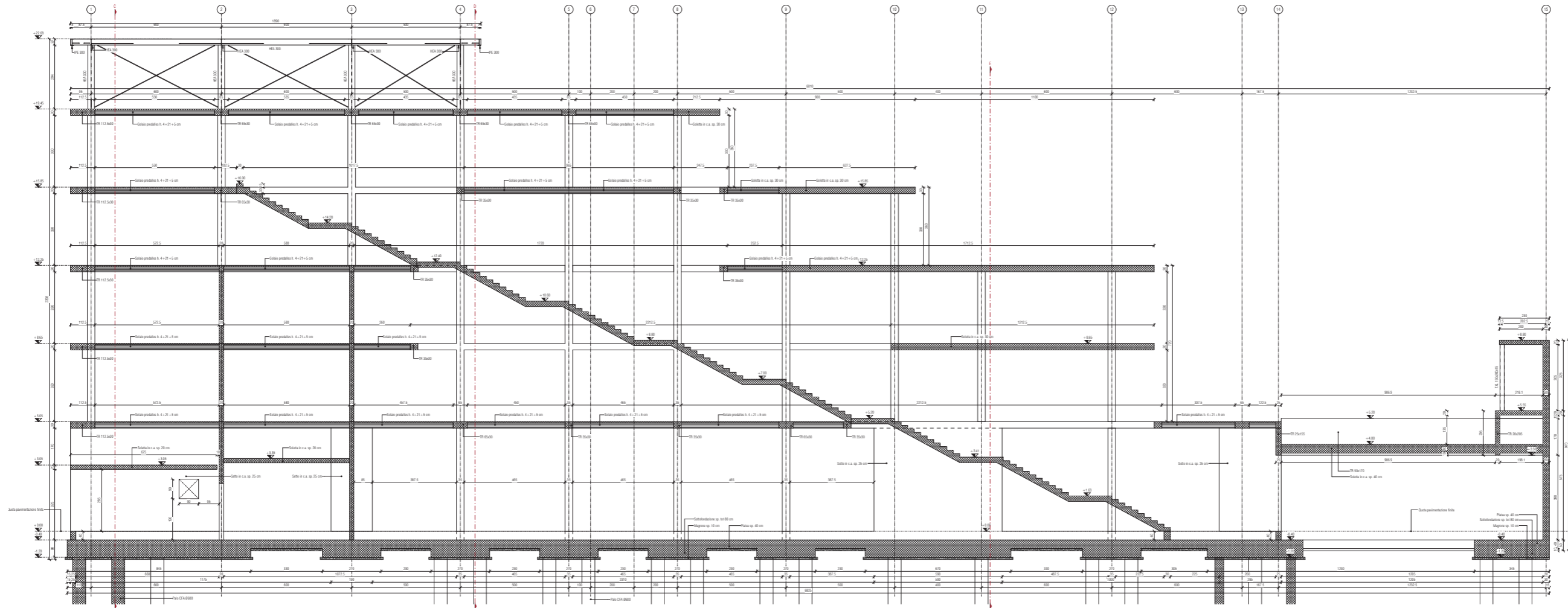




UFFICI PER LA GUARDIA DI FINANZA NELLA CASERMA BERTARINI DI BOLOGNA

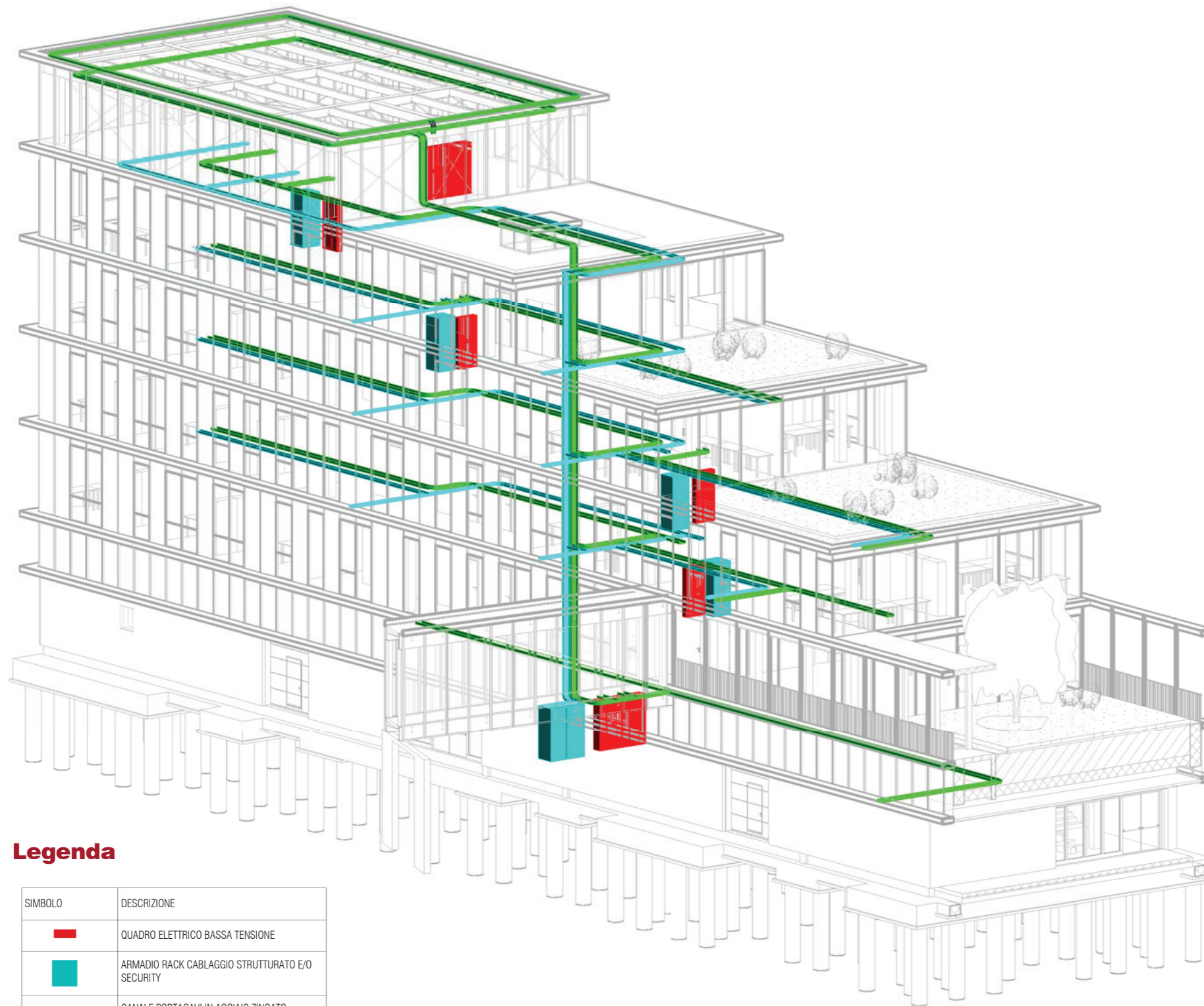
Prospetti









UFFICI PER LA GUARDIA DI FINANZA NELLA CASERMA BERTARINI DI BOLOGNA

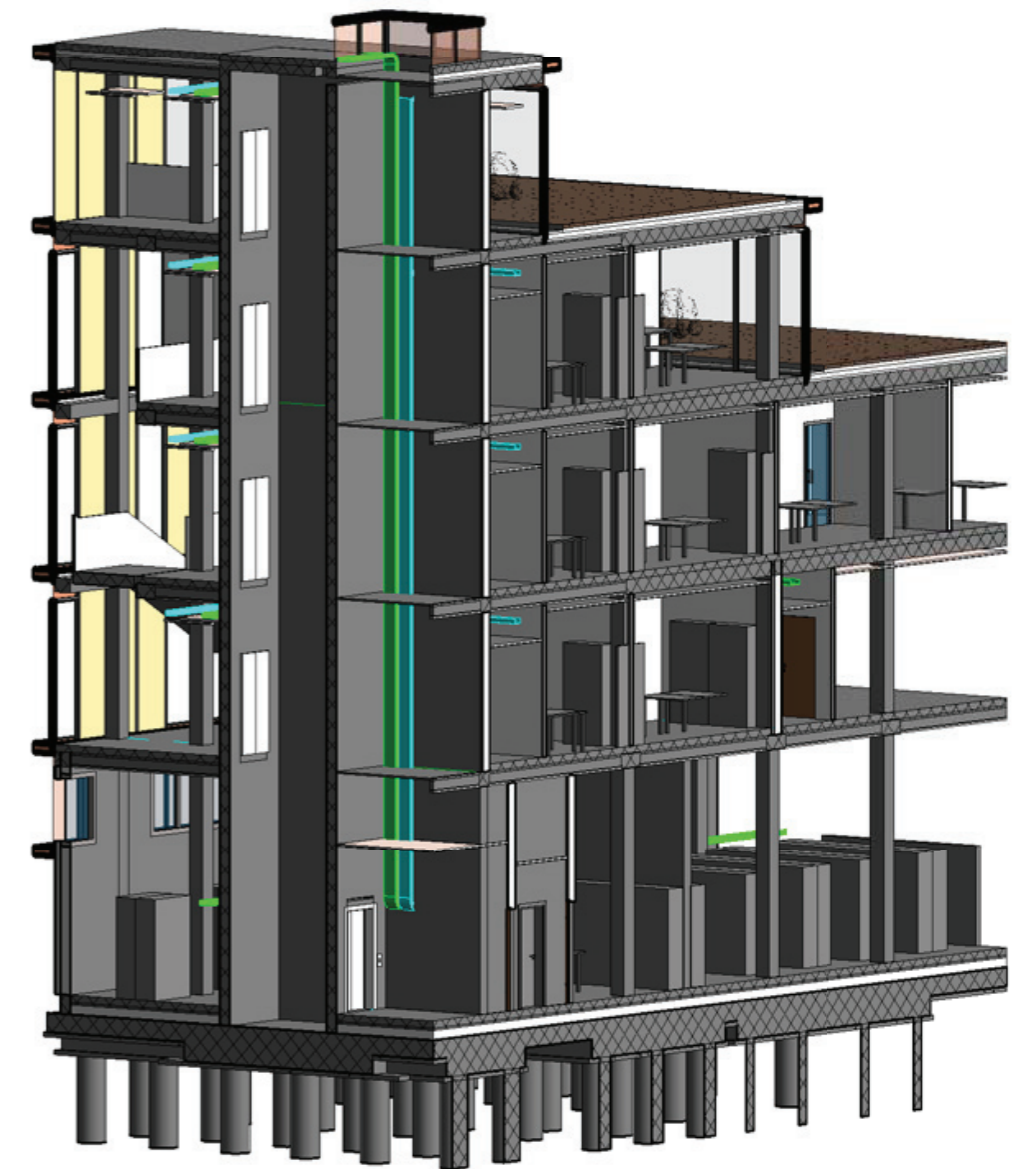
Impianto elettrico
particolari della distribuzione

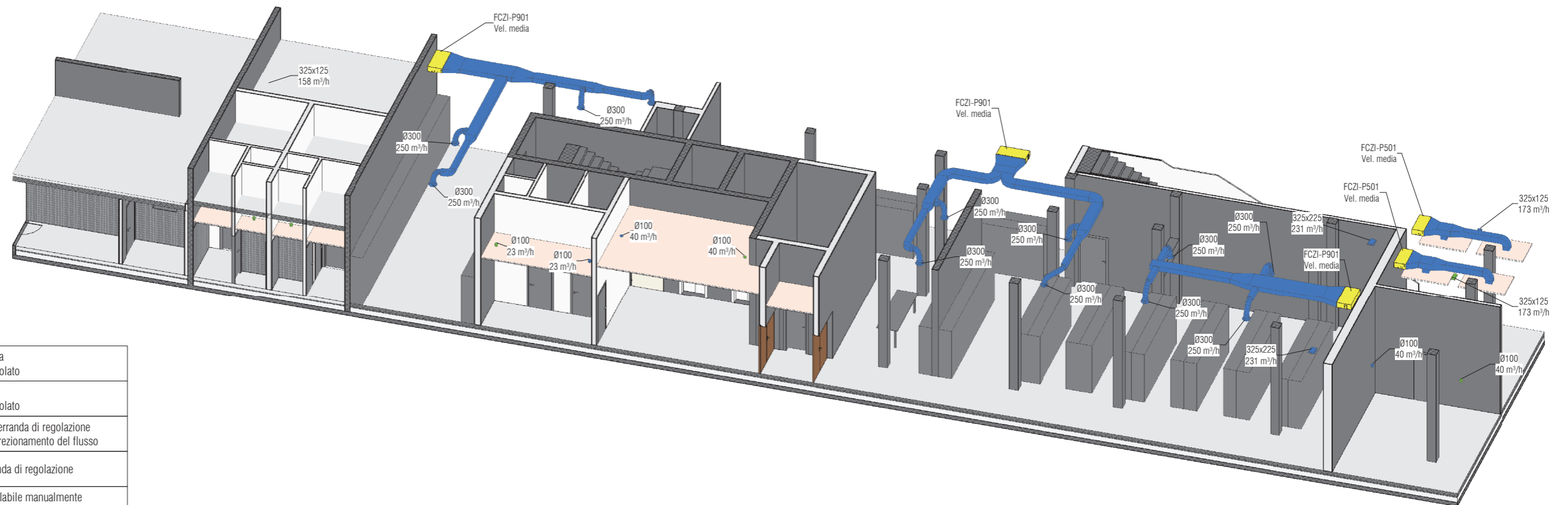
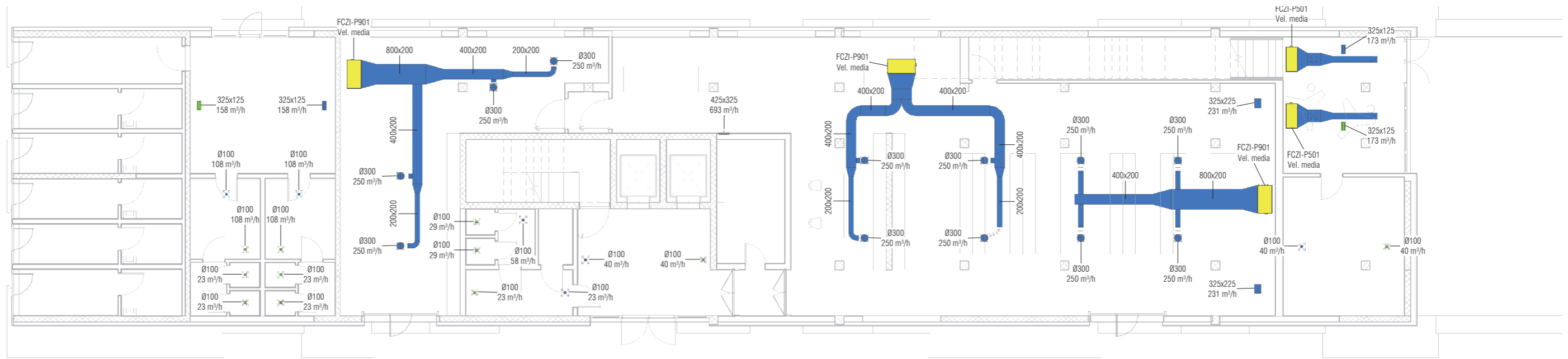


Legenda









SIMBOLO	DESCRIZIONE
	QUADRO ELETTRICO BASSA TENSIONE
	ARMADIO RACK CABLAGGIO STRUTTURATO E/O SECURITY
	CANALE PORTACAVI IN ACCIAIO ZINCATO COMPLETA DI COPERCHIO ED EVENTUALE SETTO SEPARATORE (DISTRIBUZIONE ENERGIA)
	CANALE PORTACAVI IN ACCIAIO ZINCATO COMPLETA DI COPERCHIO ED EVENTUALE SETTO SEPARATORE (DISTRIBUZIONE IMPIANTI SPECIALI)

Nota: In funzione degli spazi e alle interferenze con altri impianti, il percorso delle canalizzazioni indicato in tavola potrà essere oggetto di affinamenti in fase di esecuzione lavori.






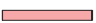


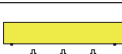


Legenda

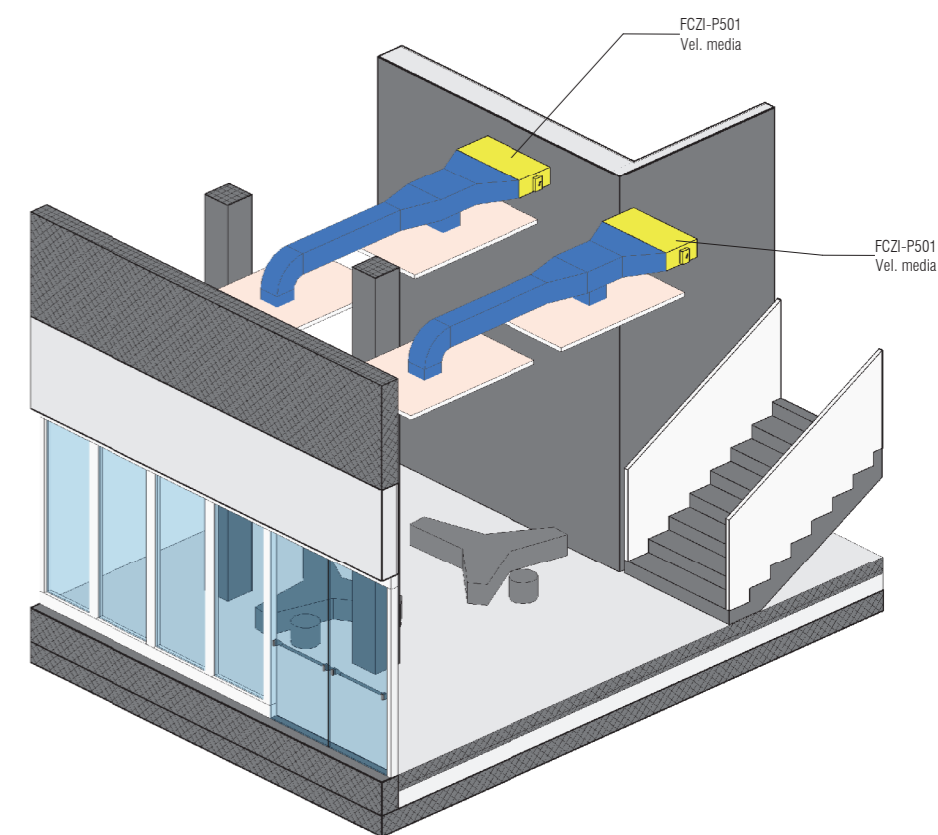
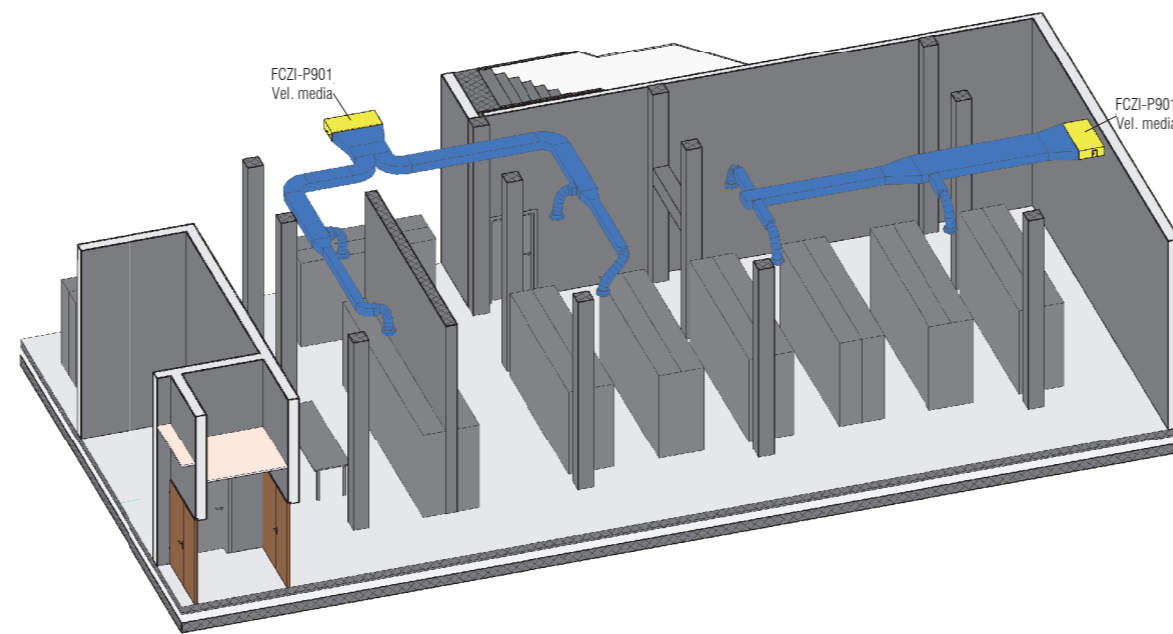
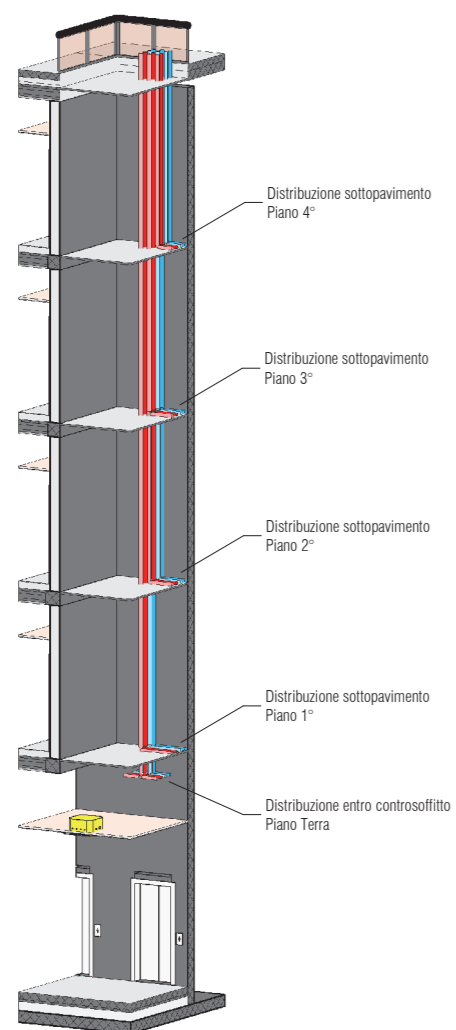
	Canale aeraulico di mandata Canale in acciaio zincato isolato
	Canale aeraulico di ripresa Canale in acciaio zincato isolato
	Diffusore di mandata con serranda di regolazione ed alette regolabili per il direzionamento del flusso
	Griglia di ripresa con serranda di regolazione
	Valvola di ventilazione regolabile manualmente mandata
	Valvola di ventilazione regolabile manualmente ripresa
	Ventilconvettore canalizzato installato a soffitto
	Serranda di intercettazione del flusso aeraulico collegata ad un sensore di presenza all'interno del locale servito

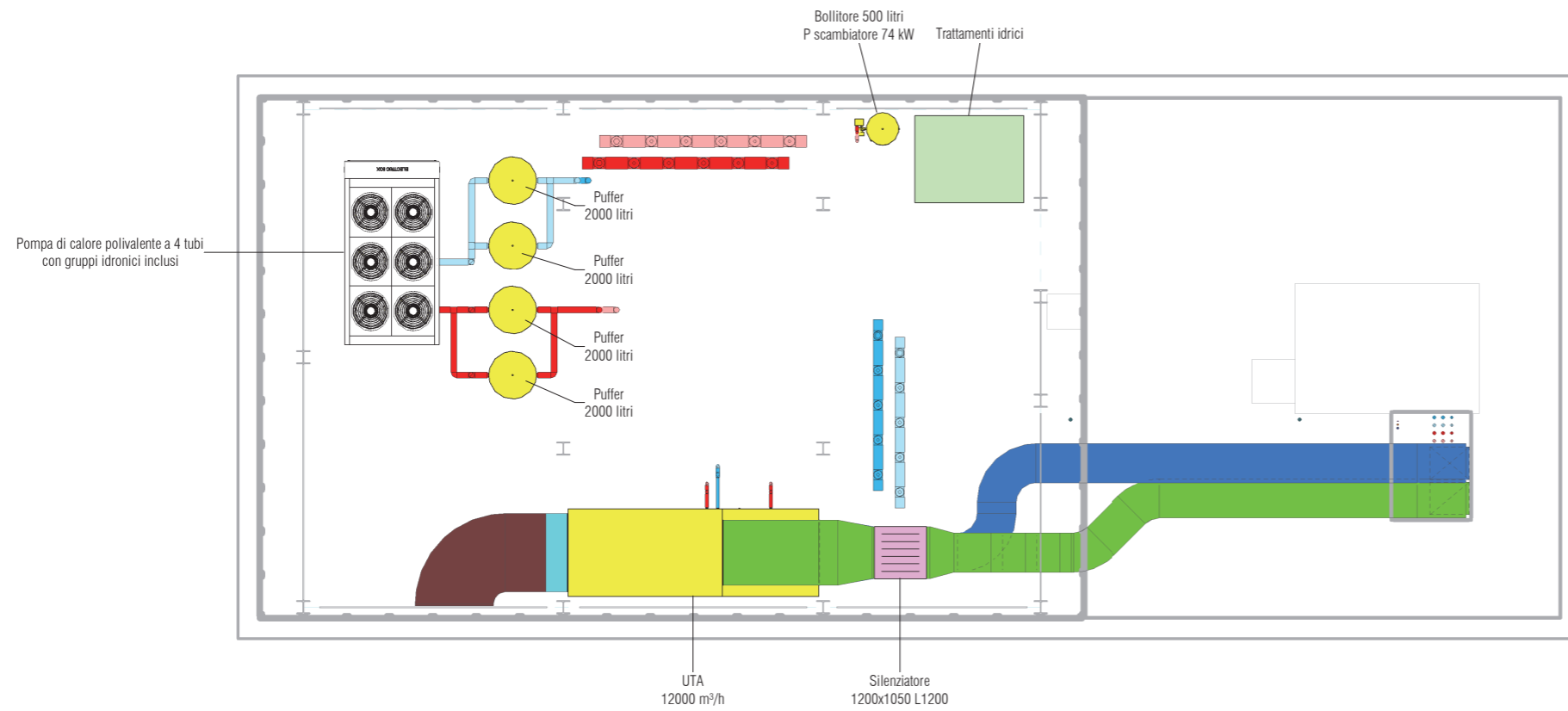
UFFICI PER LA GUARDIA DI FINANZA NELLA CASERMA BERTARINI DI BOLOGNA

Ventilconvettori canalizzati e fluidi idronici

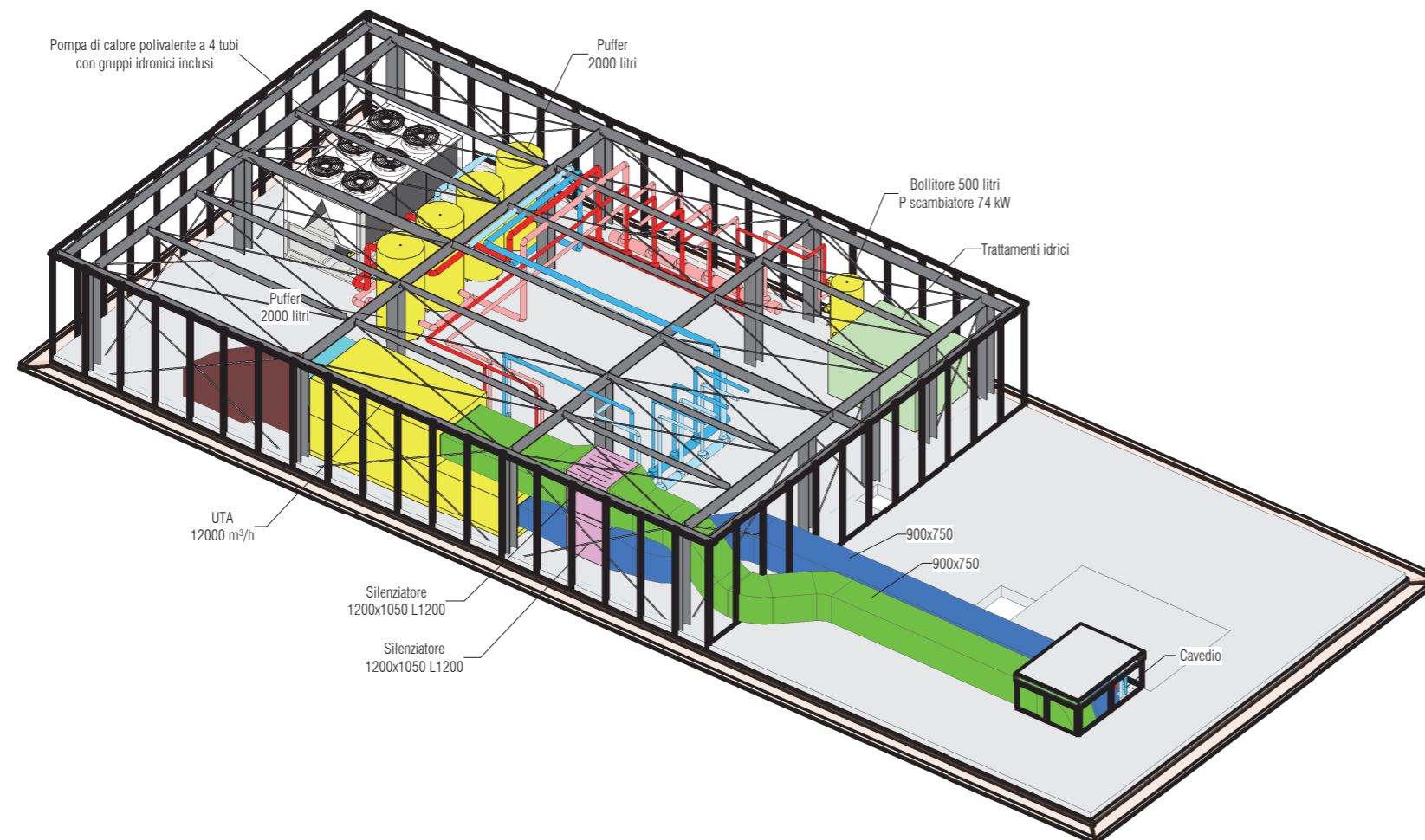
Legenda

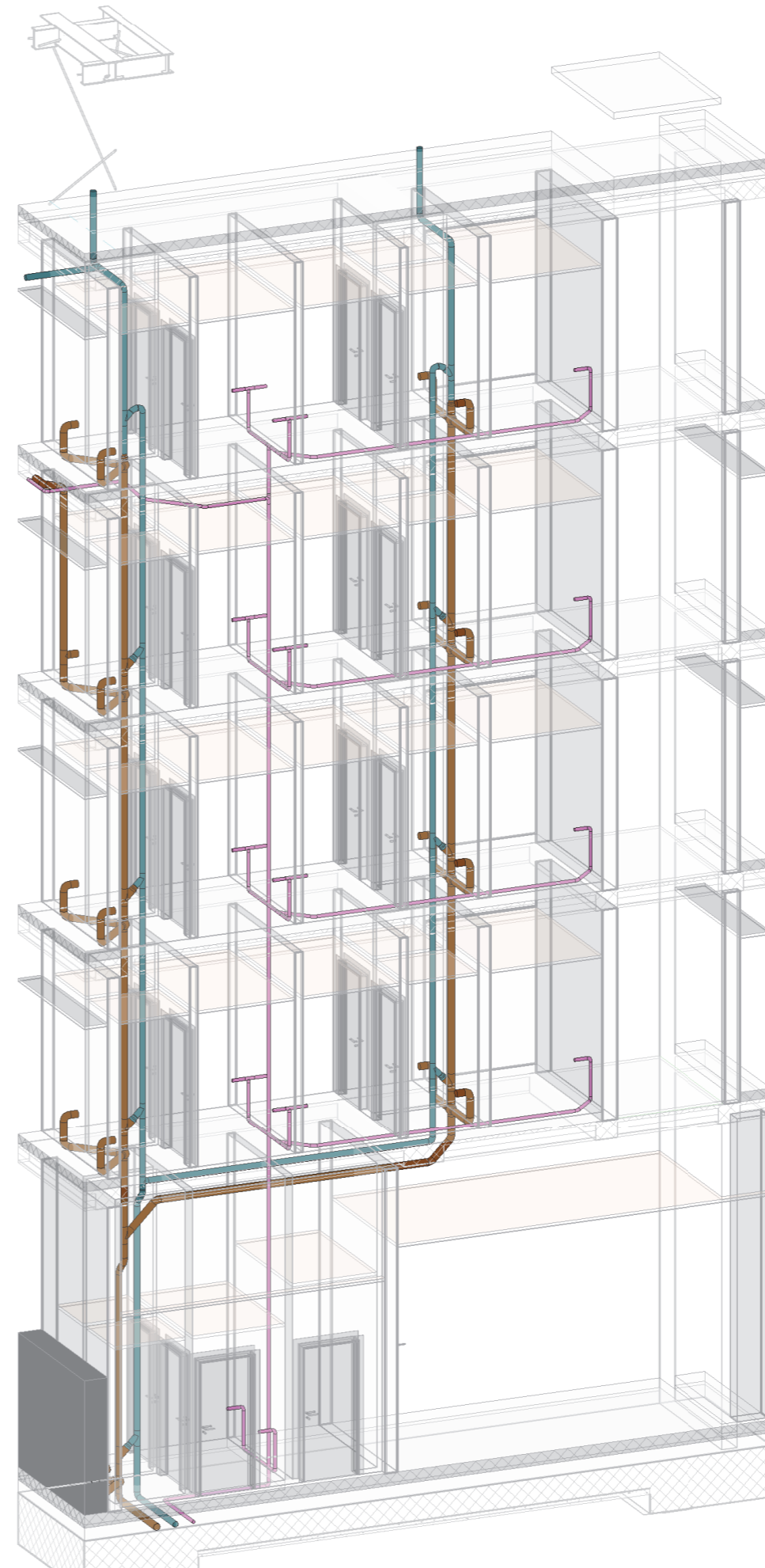
	Acqua calda alta temperatura - mandata (50°C) Tubazione in acciaio zincato isolata
	Acqua calda alta temperatura - ritorno (45°C) Tubazione in acciaio zincato isolata
	Acqua refrigerata - mandata (7°C) Tubazione in acciaio zincato isolata
	Acqua refrigerata - ritorno (12°C) Tubazione in acciaio zincato isolata
	Ventilconvettore per installazione sottopavimento h 130 mm a 4 tubi
	Ventilconvettore canalizzato a soffitto a 4 tubi
	Ventilconvettore tipo cassetta a 4 vie e a 4 tubi

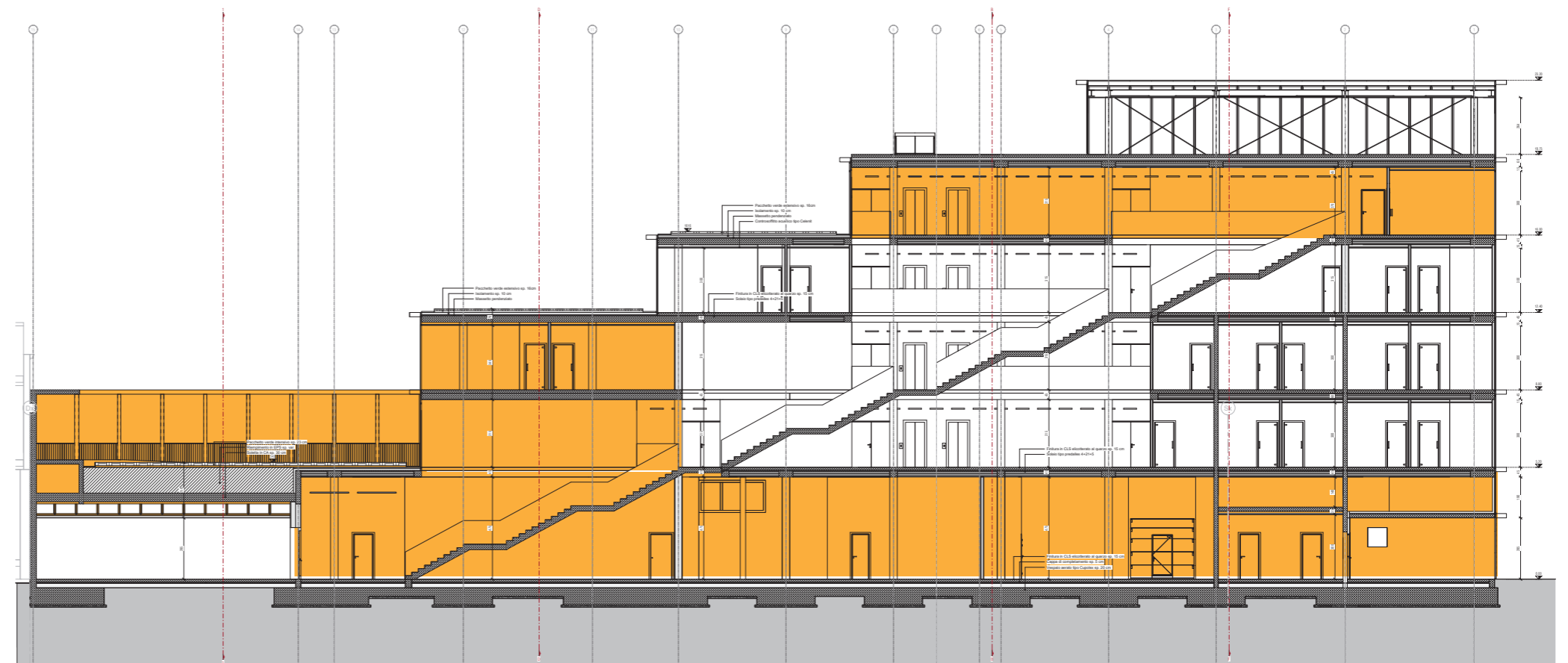
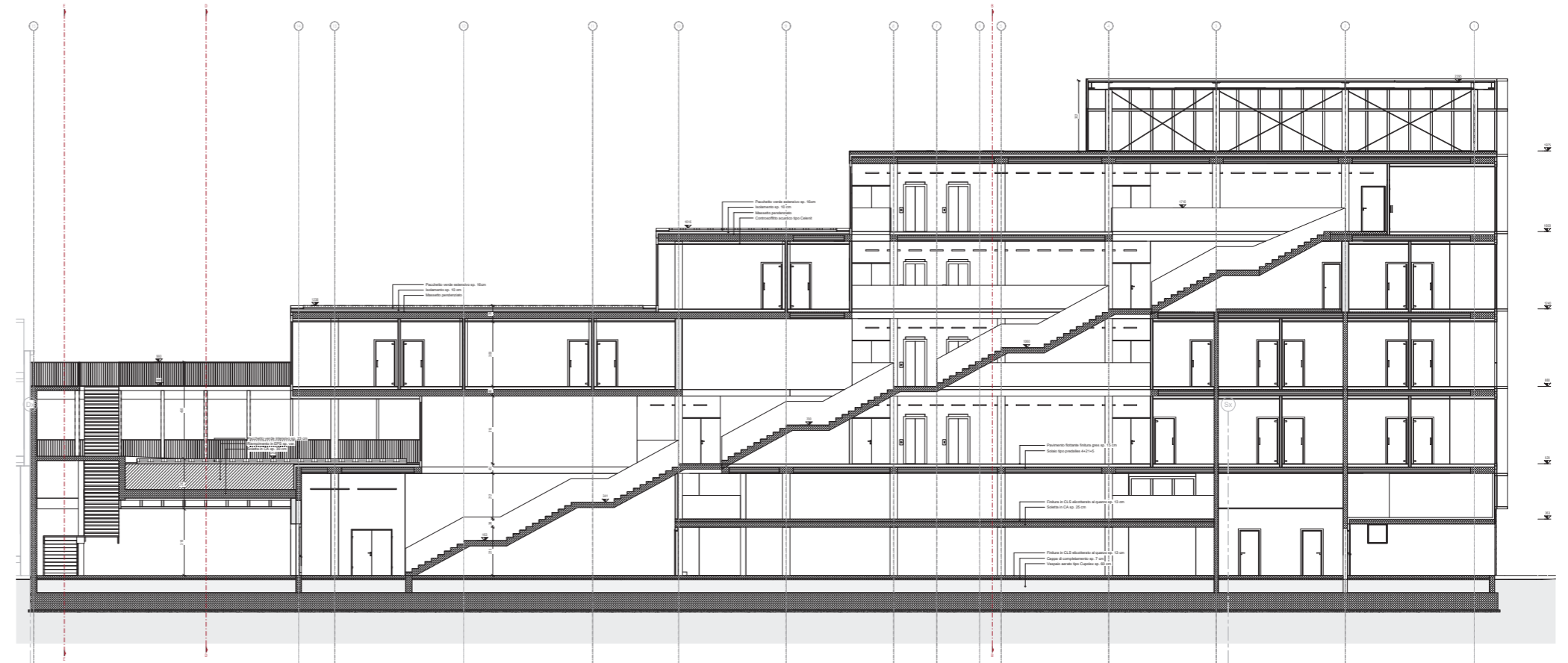




Vista piano copertura

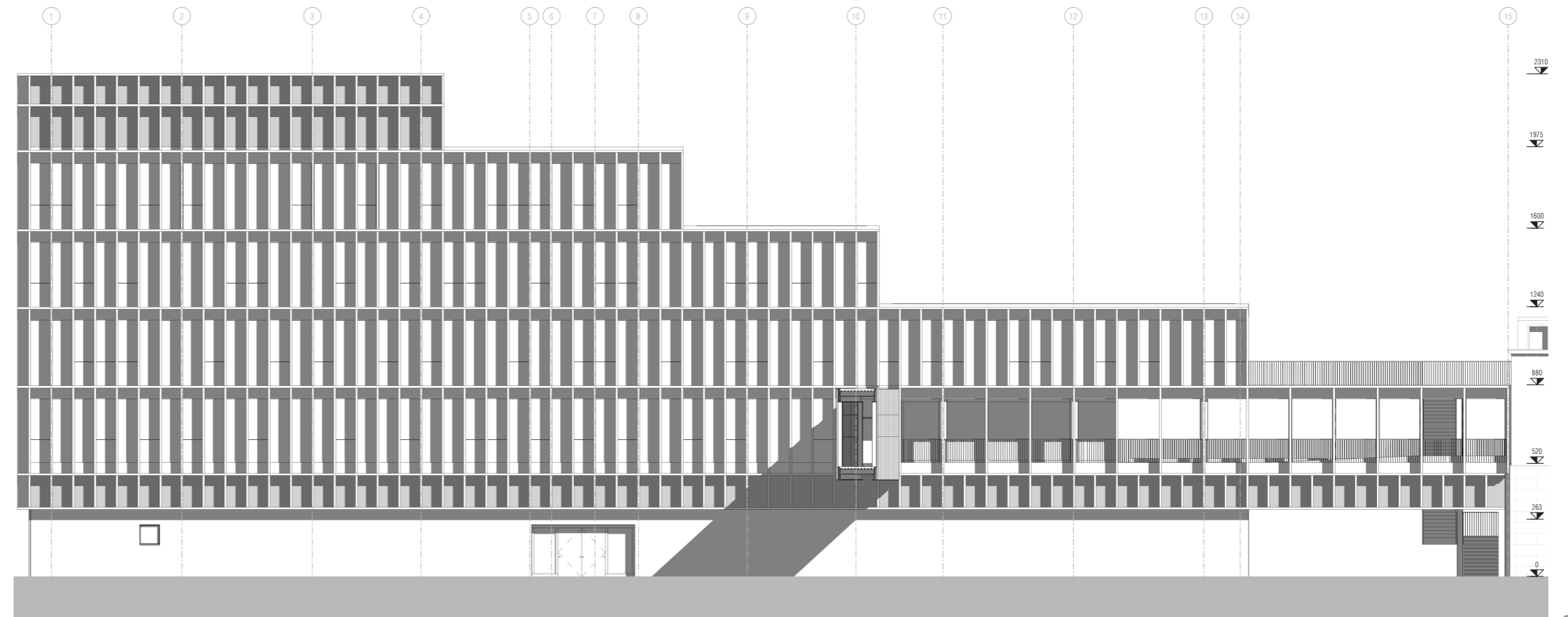




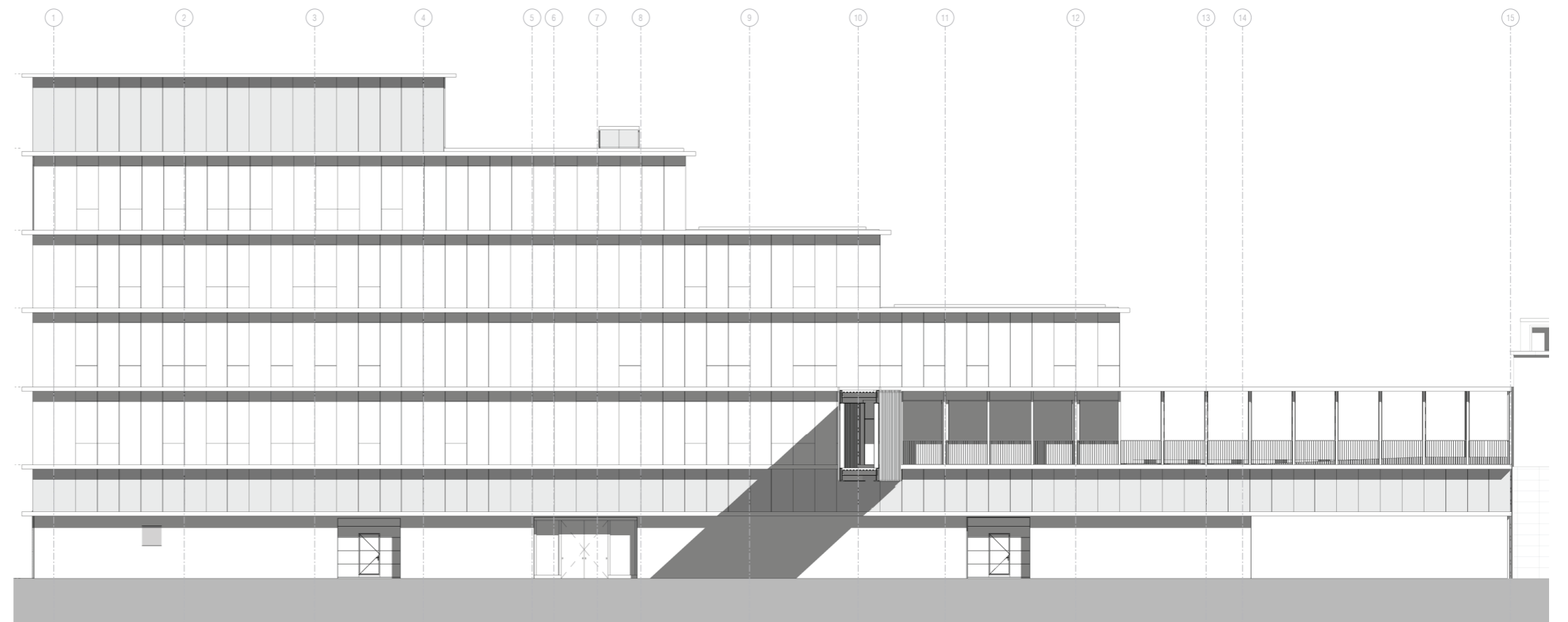


UFFICI PER LA GUARDIA DI FINANZA NELLA CASERMA BERTARINI DI BOLOGNA

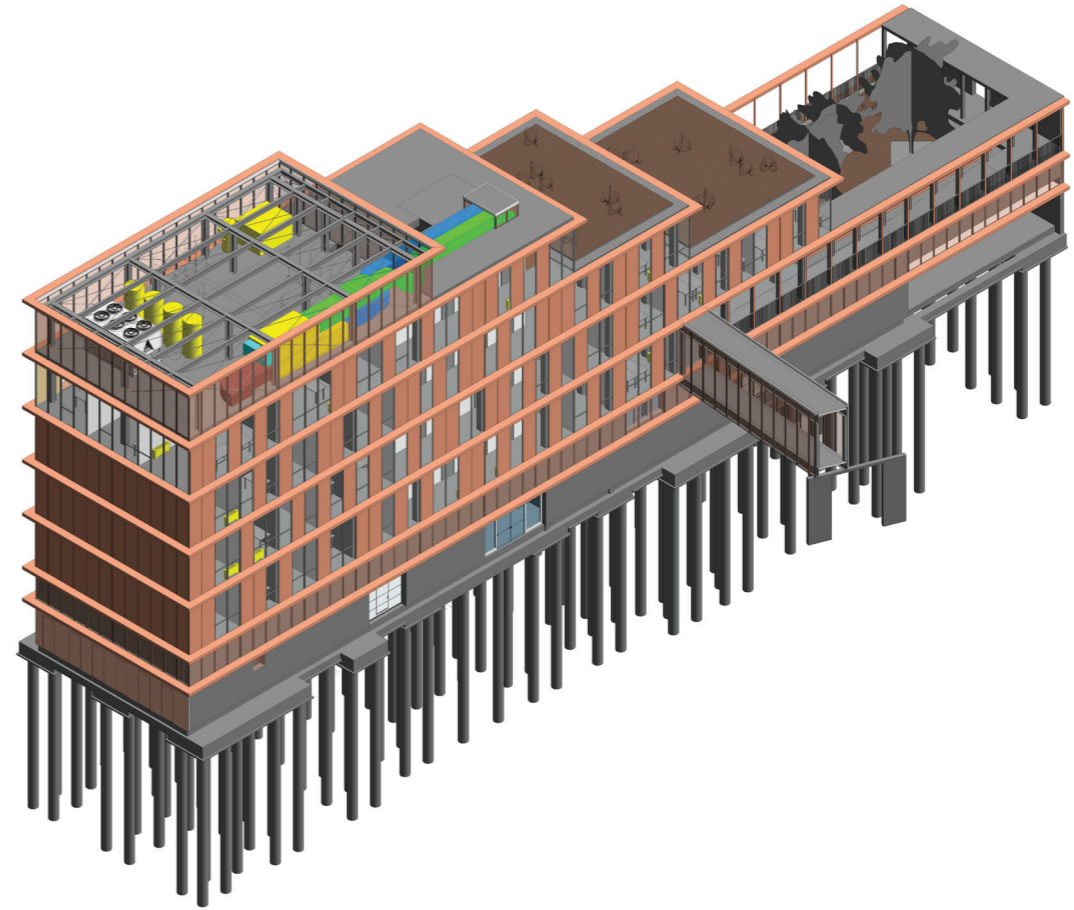
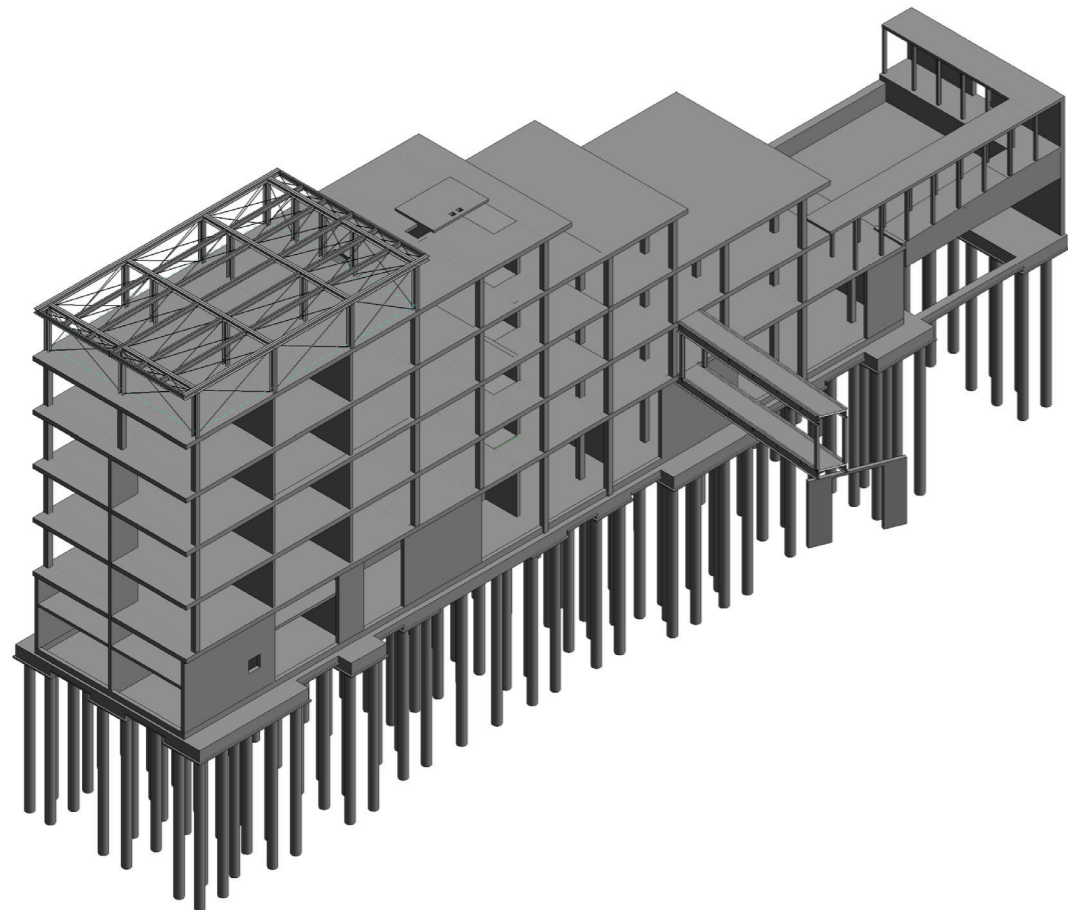
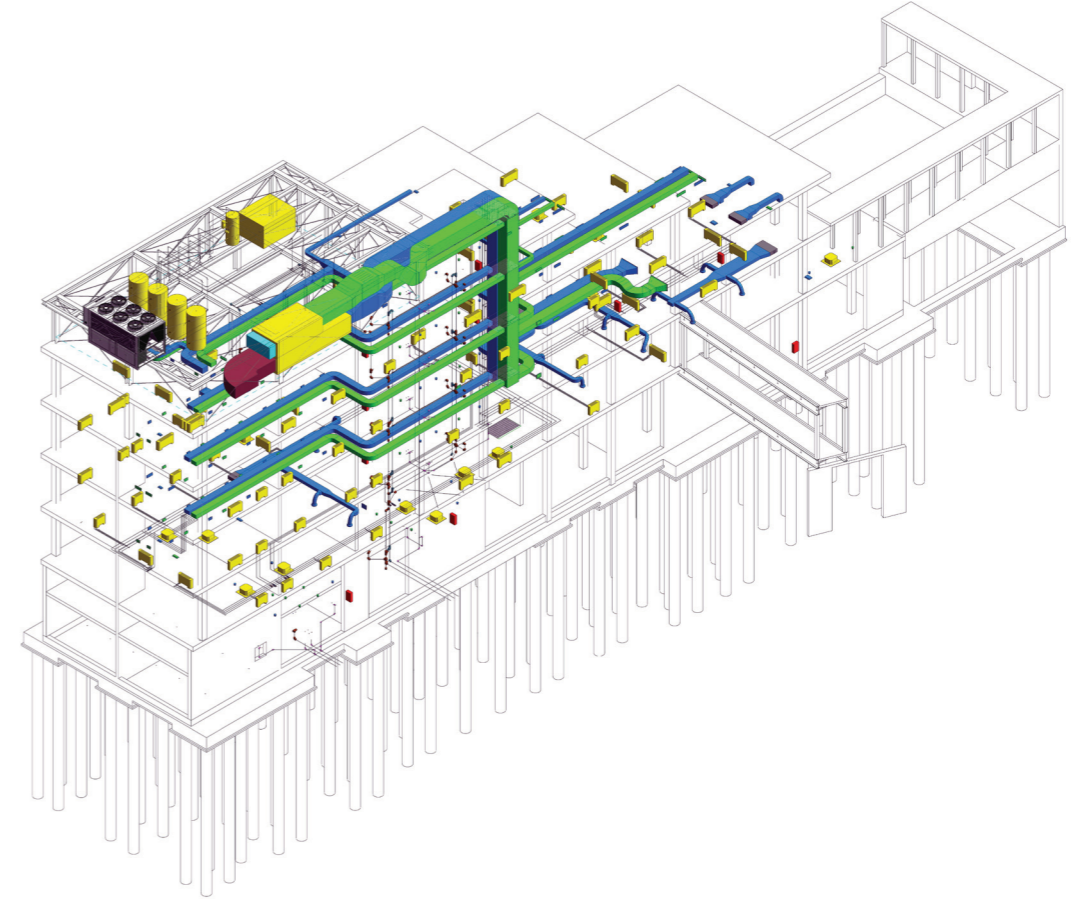
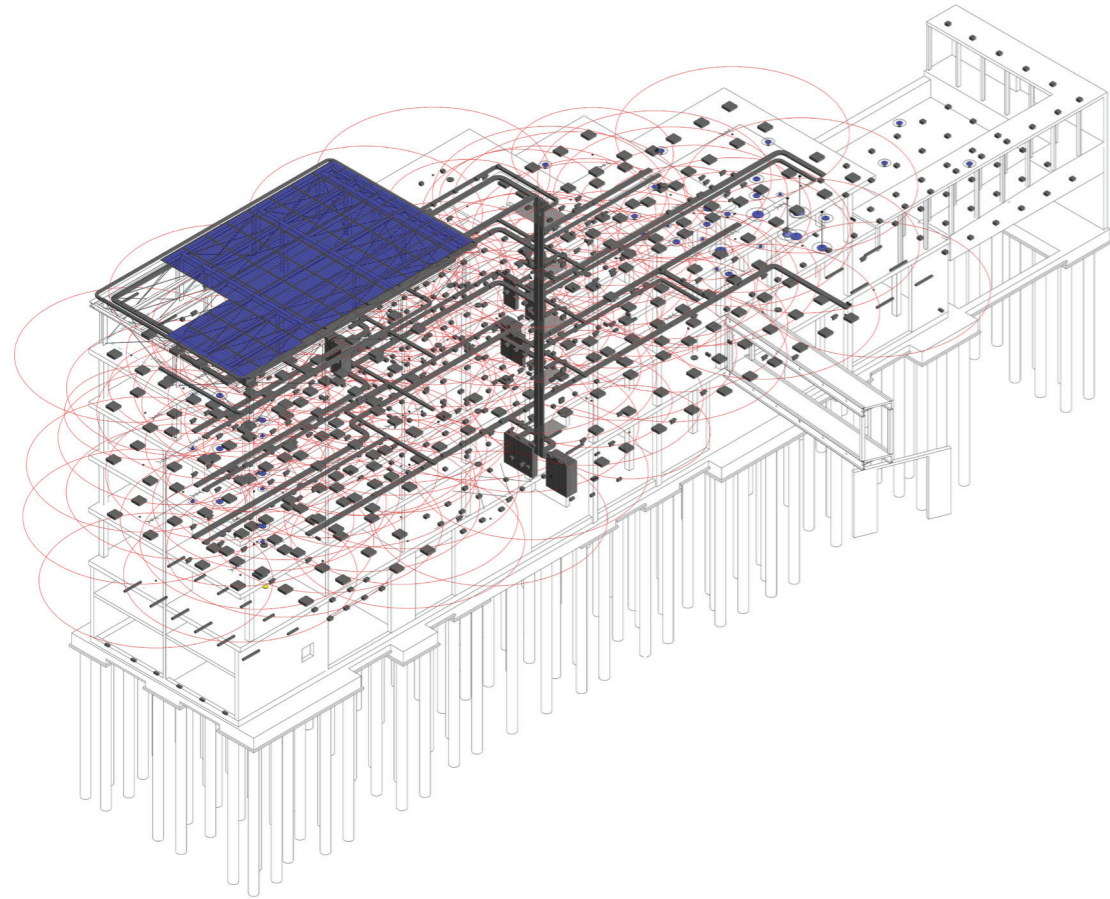
Revisione del progetto



23



UFFICI PER LA GUARDIA DI FINANZA NELLA CASERMA BERTARINI DI BOLOGNA



UFFICI PER LA GUARDIA DI FINANZA NELLA CASERMA BERTARINI DI BOLOGNA

