

Metodologie BIM – oriented:

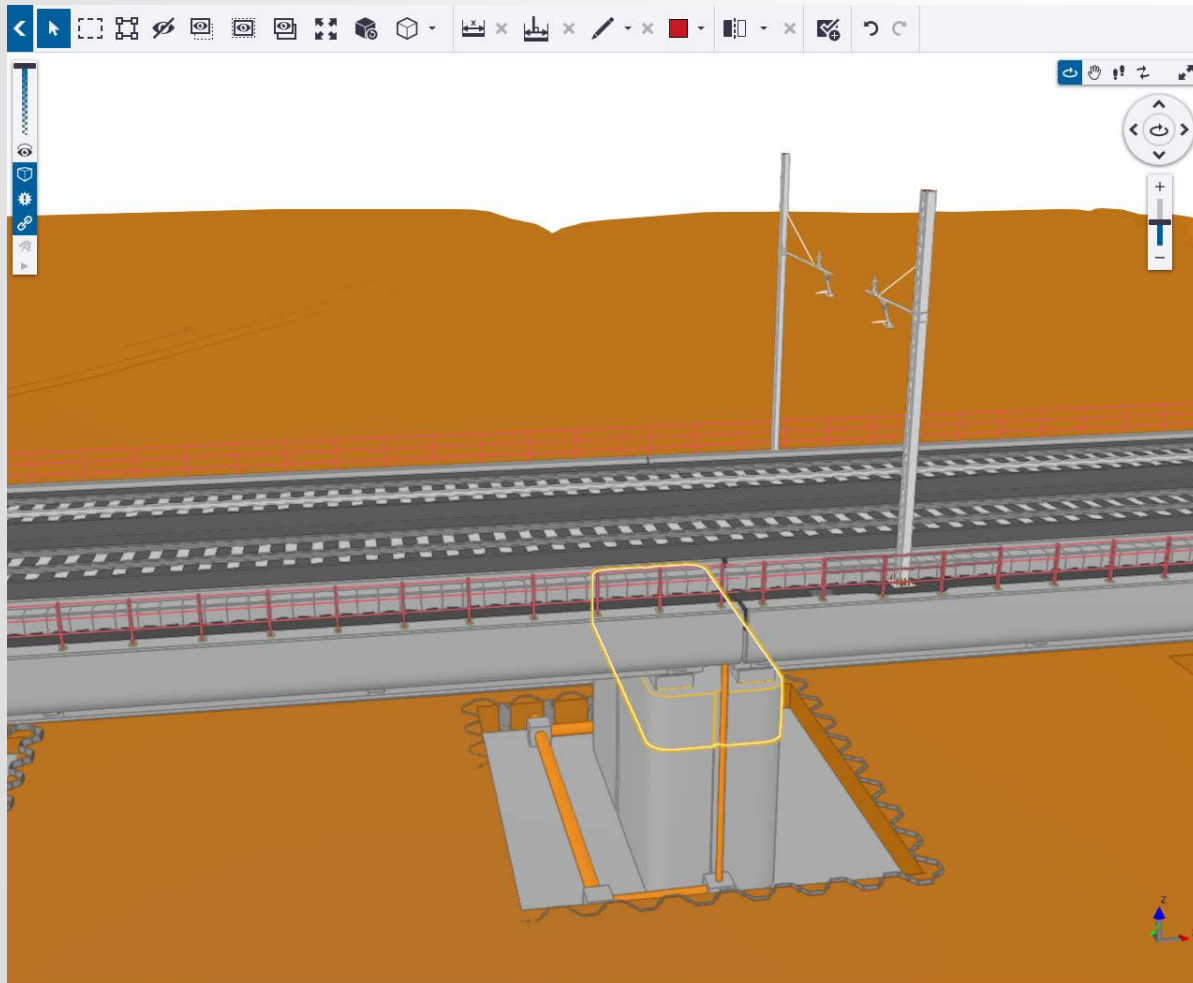
Progettazione della linea ferroviaria AV/AC Verona - Padova

Intervento a cura di:

Ing. F. Momoni – Project Manager

Ing. F. Malleni – BIM Manager

- ACDAT: ATTRIBUTI INFORMATIVI -



IfcMaterial

Material:

Calcestruzzo in opera

Allright_Comp_ID:

0576ErE0000000735

Unità:

m³

Nomeoggetto:

Pulvino

NOI_UUID:

3b960ba6-b104-4707-8167-951c8b8083ad--0

IFC ObjectType:

IfcSlab

● Classe di esposizione:

XC4

● Classe di consistenza:

S3

Ruolo organizzazione:

I2

Classificazione:

En_80_50_Ss_20_50

Presentazione:

M

● Tipo d'Opera (+ Progressivo):

VI02

● Tratto d'Opera:

B dal Km 11+572.62 al Km 11+816.62

● Parte d'Opera:

P07

● WBS computo:

VI-6 - Pulvini

● Classe di resistenza:

C32/40

SlabQuantities

● GrossVolume:

49,0 m3

NetVolume:

0,0 m3

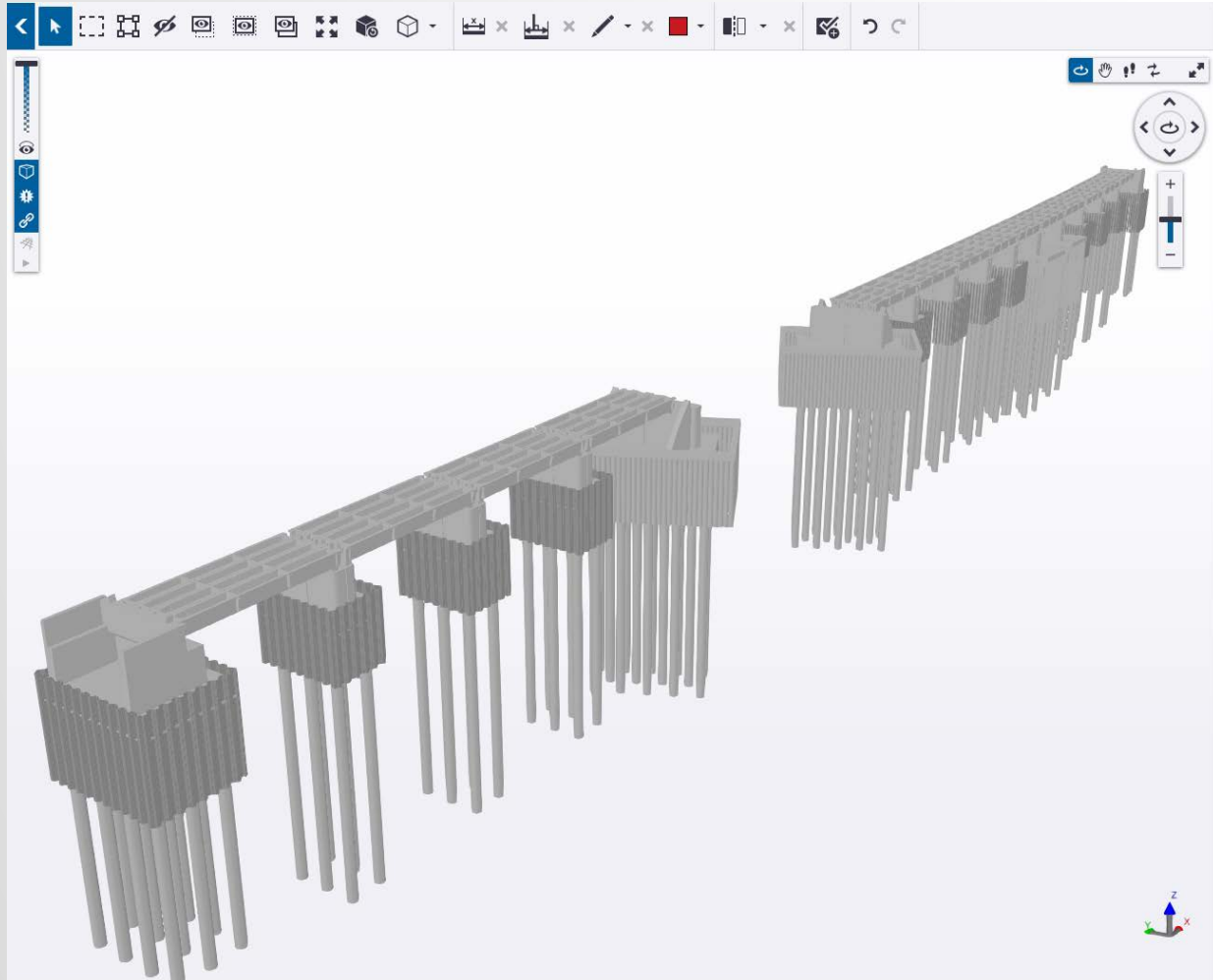
GrossSideArea:

106,10 m2

Width:

1500 mm

- ACDAT: COERENZA INFORMATIVA -



OBJECTS

All objects Colorize groups Reset colors

Filter Group by: WBS computo ●

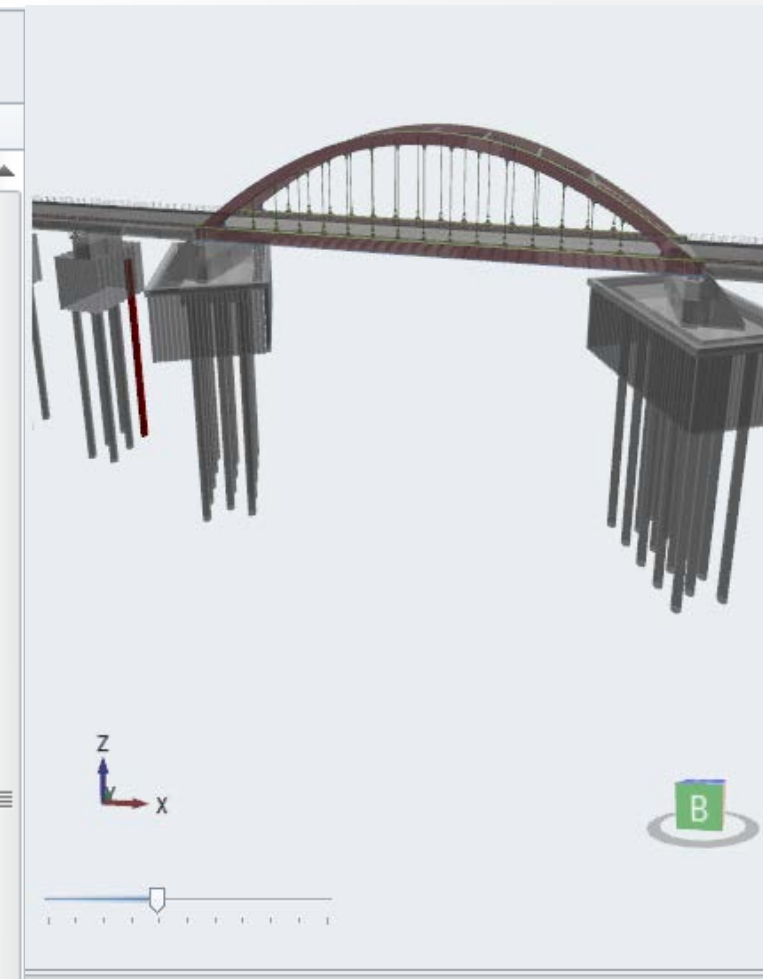
Object names	Author names
Other (17758)	-
VI-2 - Pali o pozzi (612) ●	-
VI-3 - Fondazioni (780) ●	-
VI-4 - Spalle (6) ●	-
VI-5 - Pile (14) ●	-
VI-6 - Pulvini (42) ●	-
VI-7 - Travi d'impalcato in cls... (1224) ●	-
VI-8 - Travi d'impalcato in acciaio (10)	-
VI-9 - Soletta di completamen... (1450)	-
VI-B - Opere di finitura di linea (198)	-

- ATTRIBUTI E COMPUTI METRICI -

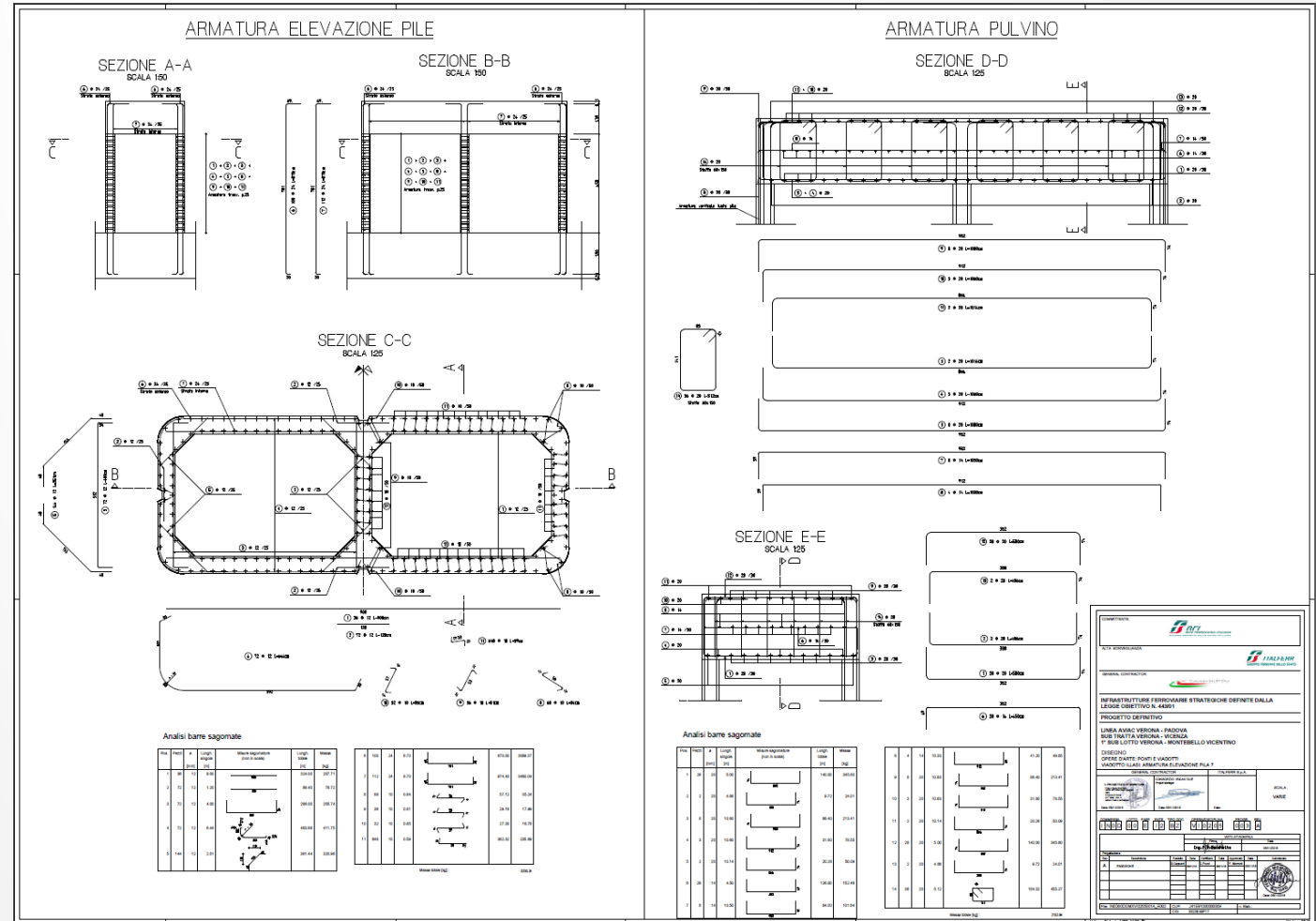
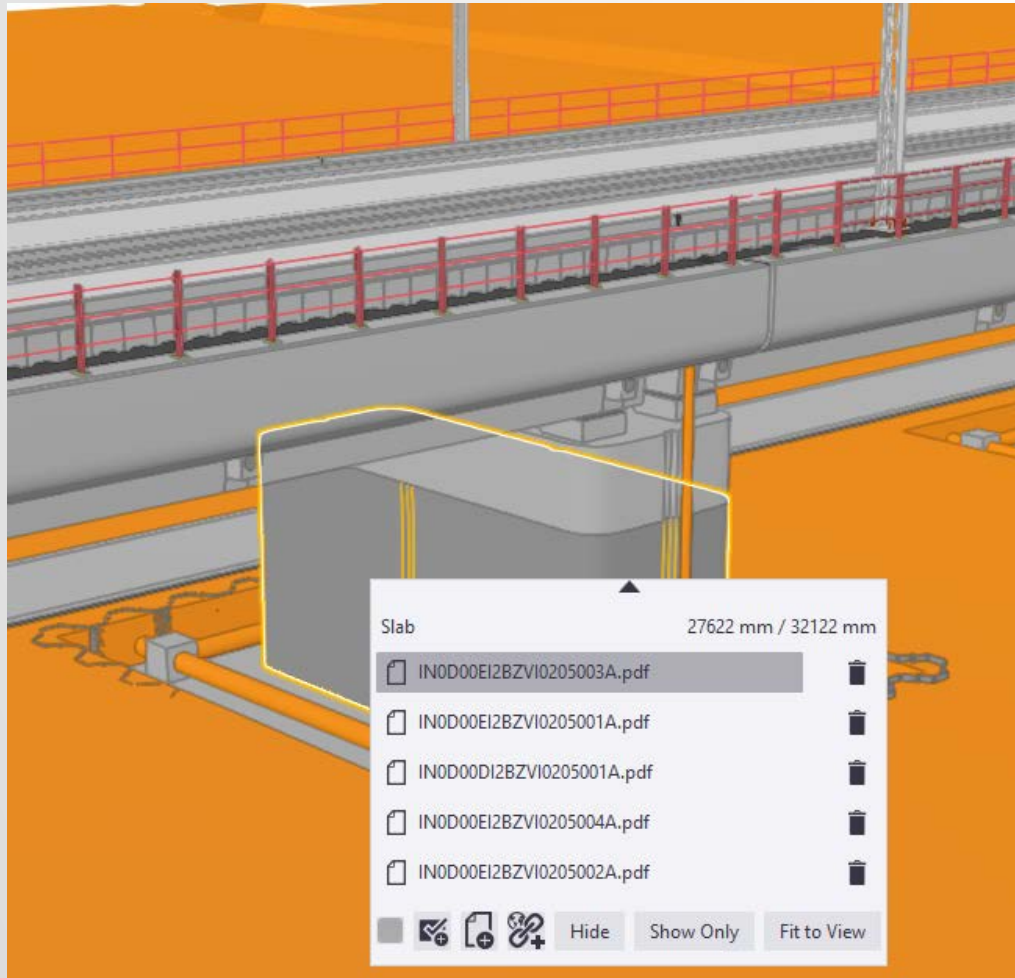
Articolo	Breve	Cod. U.M.	Des. U.M.	Quantità
BA.PD.A.3...	Pali trivellati di grande diametro co...	M	m	228,000
BA.PD.B.31...	Oneri di smaltimento fanghi bentonitic...	MC	mc	678,588
BA.PD.B.31...	Oneri di smaltimento fanghi bentonitic...	MC	mc	402,912
BA.PD.B.31...	Oneri di smaltimento fanghi bentonitic...	MC	mc	402,912
BA.PD.B.31...	Oneri di smaltimento fanghi bentonitic...	MC	mc	402,912
BA.CZ.C.3...	Fornitura e posa in opera di acciaio in...	KG	kg	81 430,560
BA.CZ.C.3...	Fornitura e posa in opera di acciaio in...	KG	kg	40 291,200
BA.CZ.C.3...	Fornitura e posa in opera di acciaio in...	KG	kg	40 291,200
BA.CZ.C.3...	Fornitura e posa in opera di acciaio in...	KG	kg	40 291,200
BA.PD.A.3...	Scapitozzatura testa pali - Diametro 1...	CAD	cad	12,000
BA.PD.A.3...	Scapitozzatura testa pali - Diametro 1...	CAD	cad	6,000

1 284 447,97 | Imp. Costo: 1 284 447,97 | Imp. Offerta: 1 284 447,97 << < 4/6

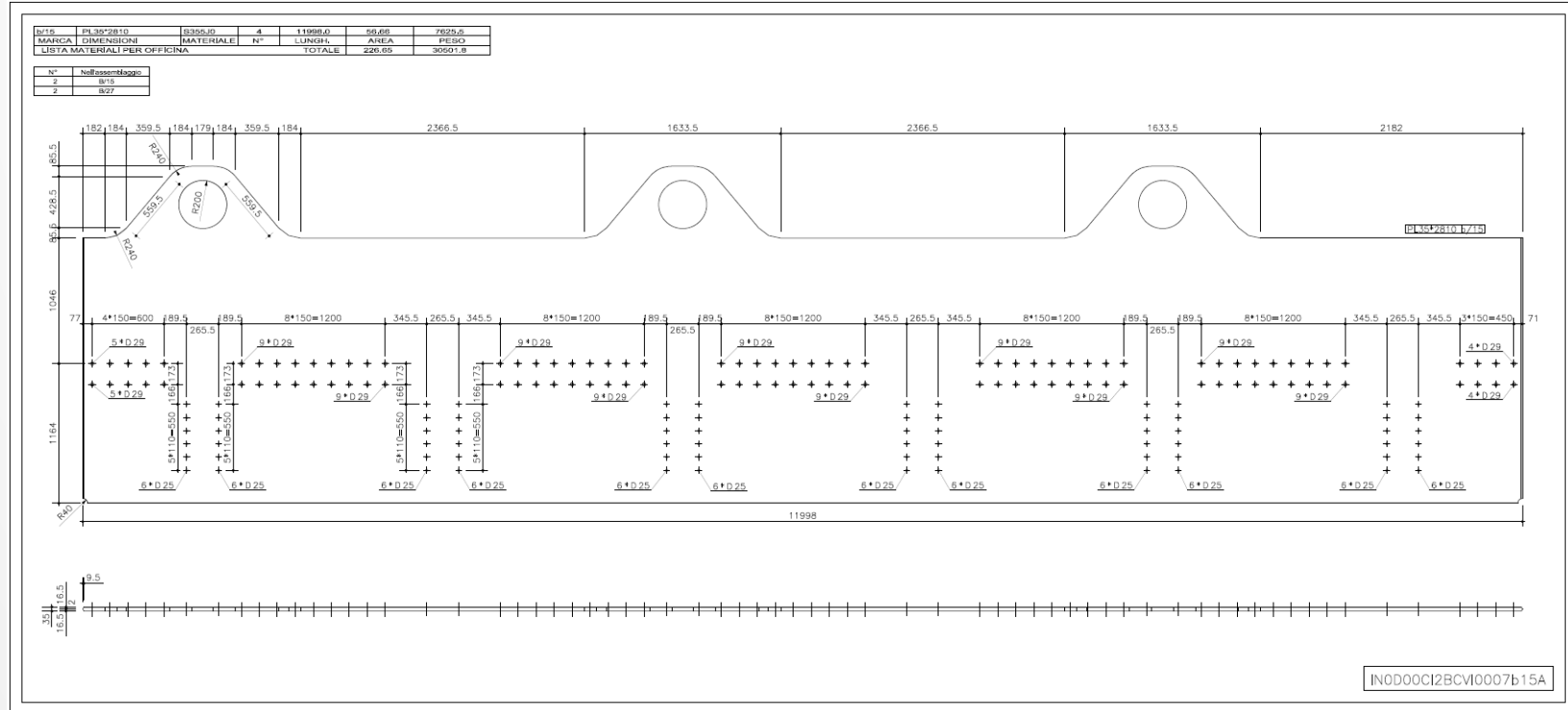
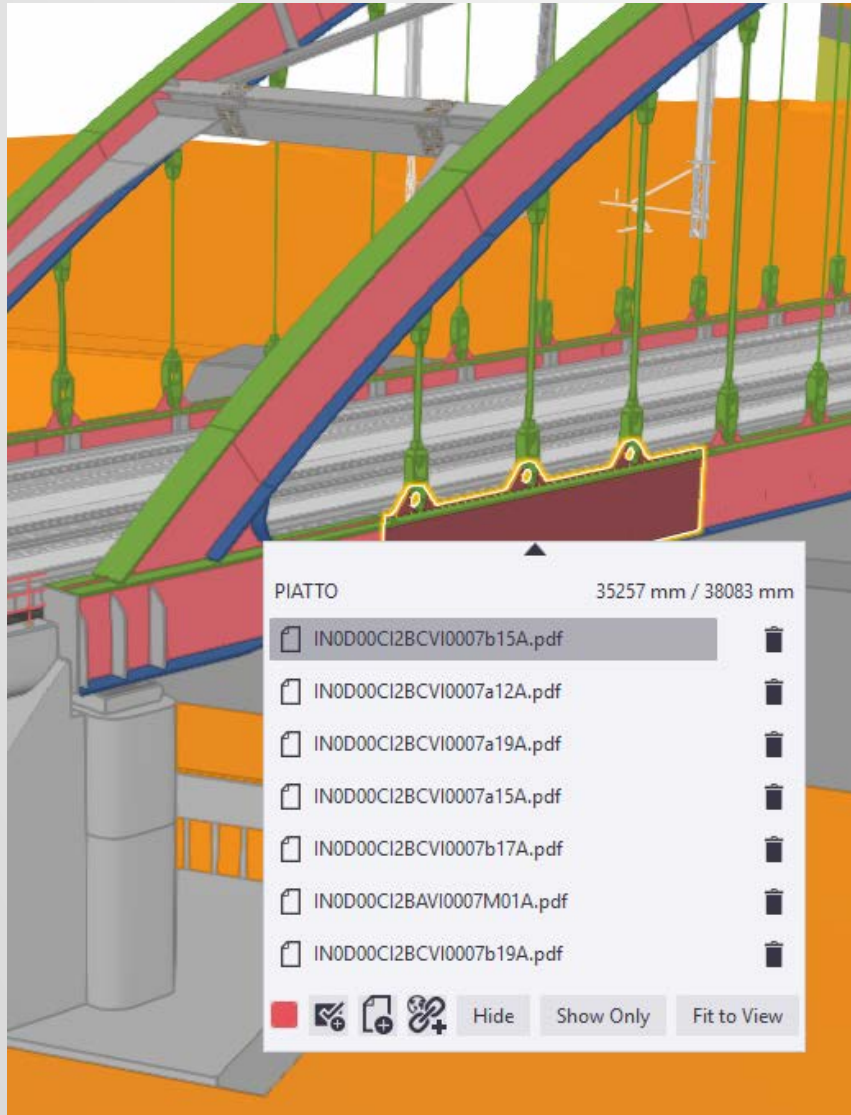
Gruppo dati	
Nome	Valore
allright_comp_id	0530ErE0000000101
classe Di Consisten...	S4
classe Di Esposizione	XC2
classe Di Resistenza	C25/30
classificazione	En_80_50_Ss_20_50
ifc Objecttype	IfcColumn
noi_uuid	5e75945a-e2eb-468c-b...
nome_oggetto	Pali di sottofondazione
parte D Opera	P03
presentazione	M
ruolo Organizzazione	I2
tipo D Opera Progr...	VI02
tratto D Opera	A dal Km 11+394.62 al ...
unita	m ³
wbs Computo	VI-2 - Pali o pozzi
Identificazione	



- DATABASE: ELABORATI GRAFICI -



- DATABASE: ELABORATI GRAFICI -



- ACDAT: FLUSSO DELLE ATTIVITA' -

Title Risoluzione Interferenza

Description Controllare La sovrapposizione tra i due impalcati

Assignee Malleni Federico

Tags

Priority High




Due date 14/12/2018

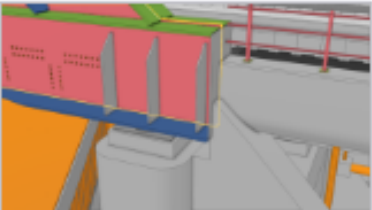

Type Clash

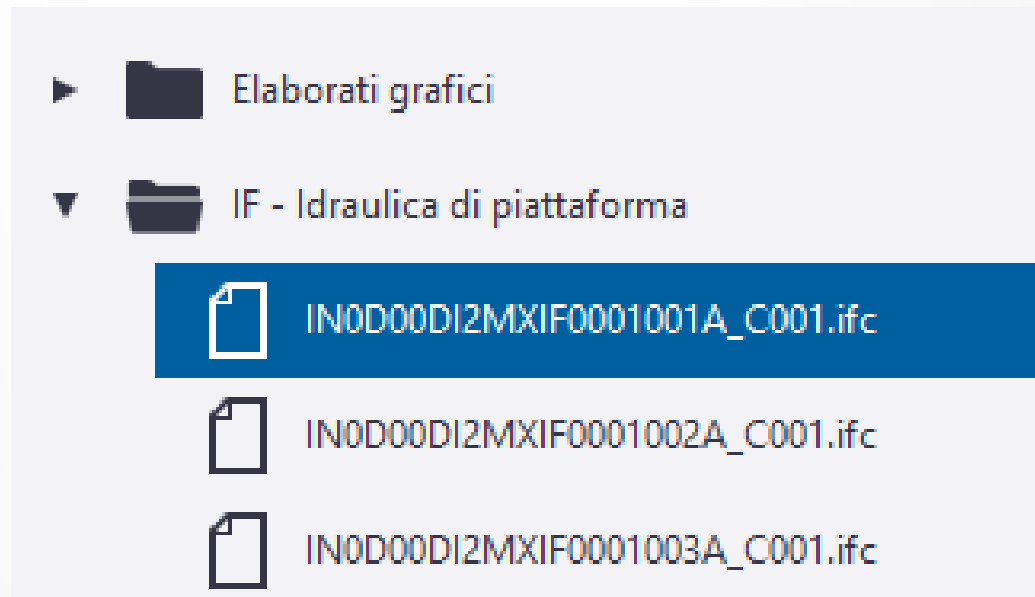
Status In Progress

Completion % 0

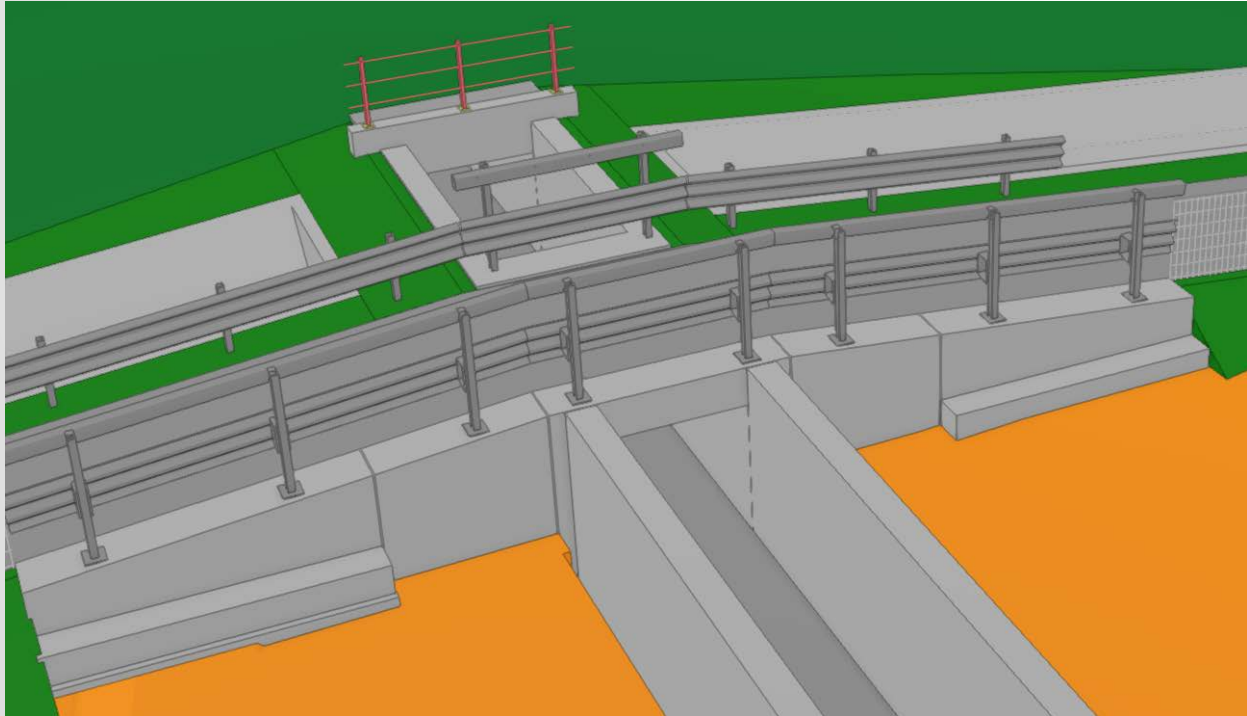
Attachments

 0  Add  Remove

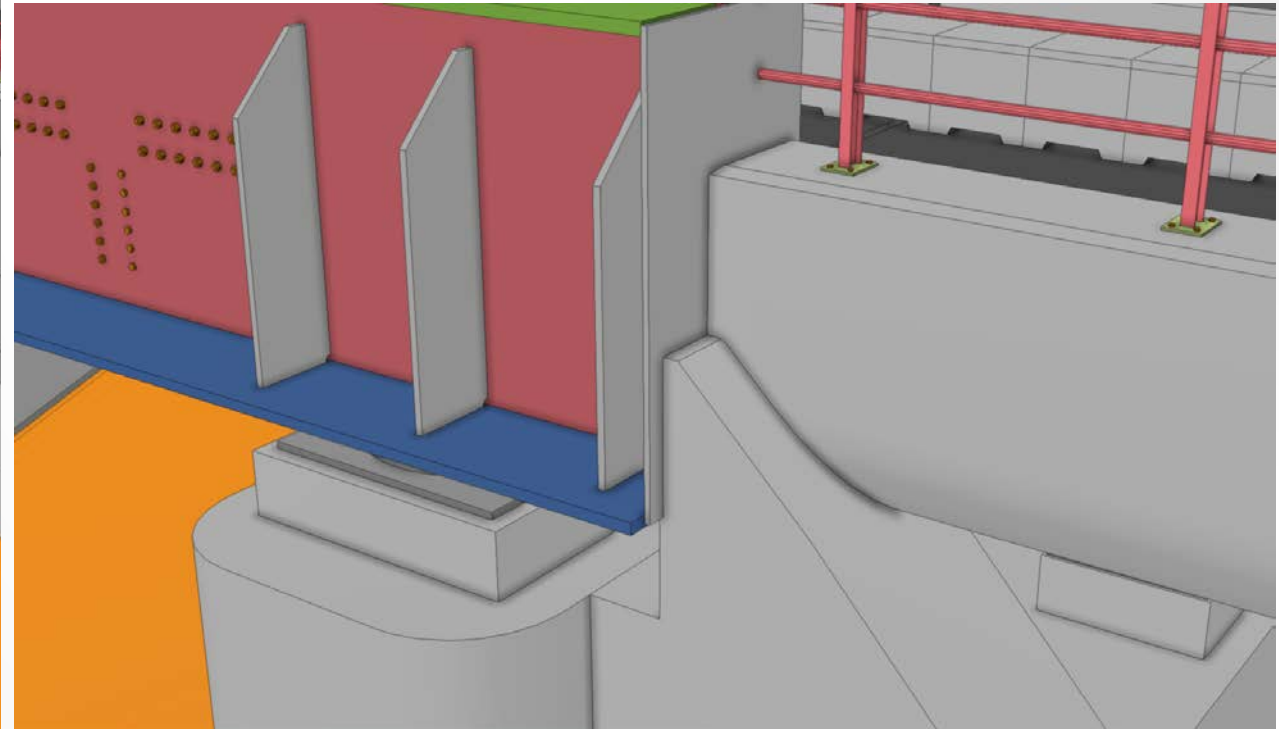
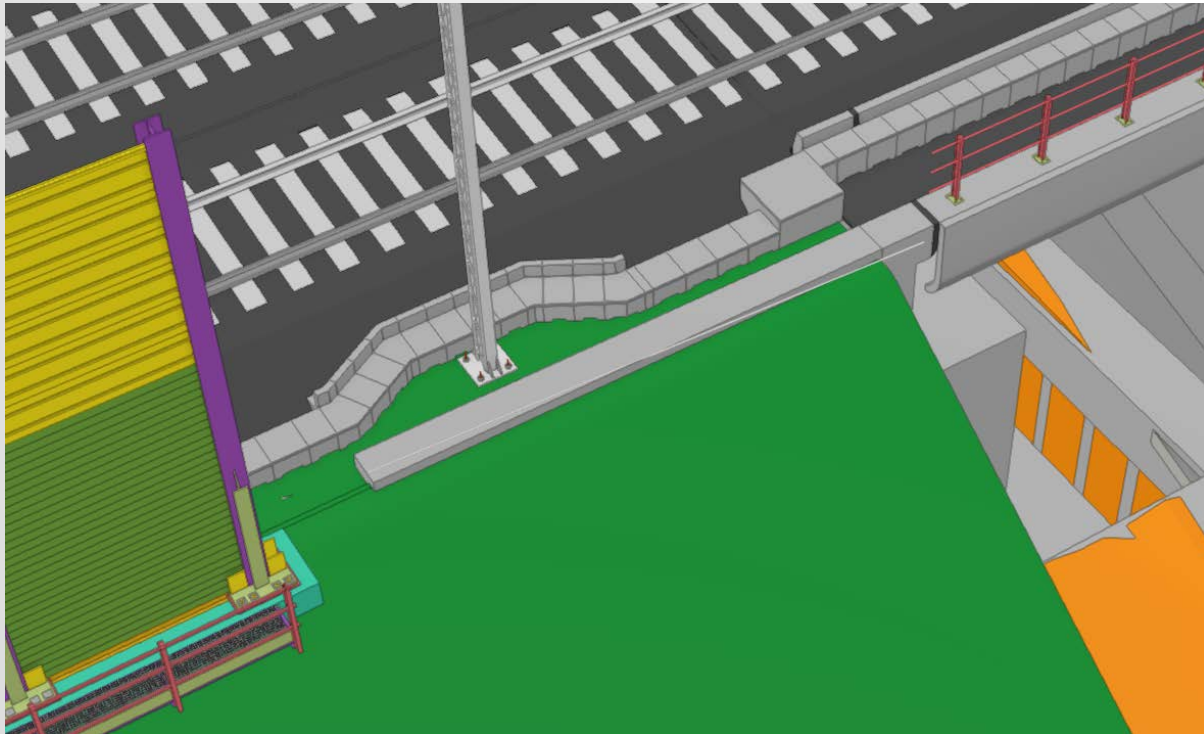
 View for 106 models 



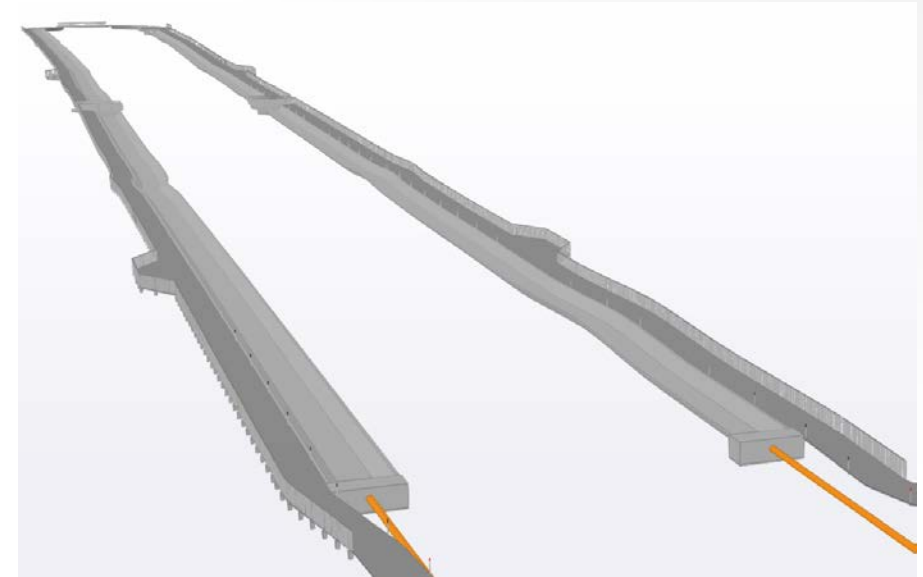
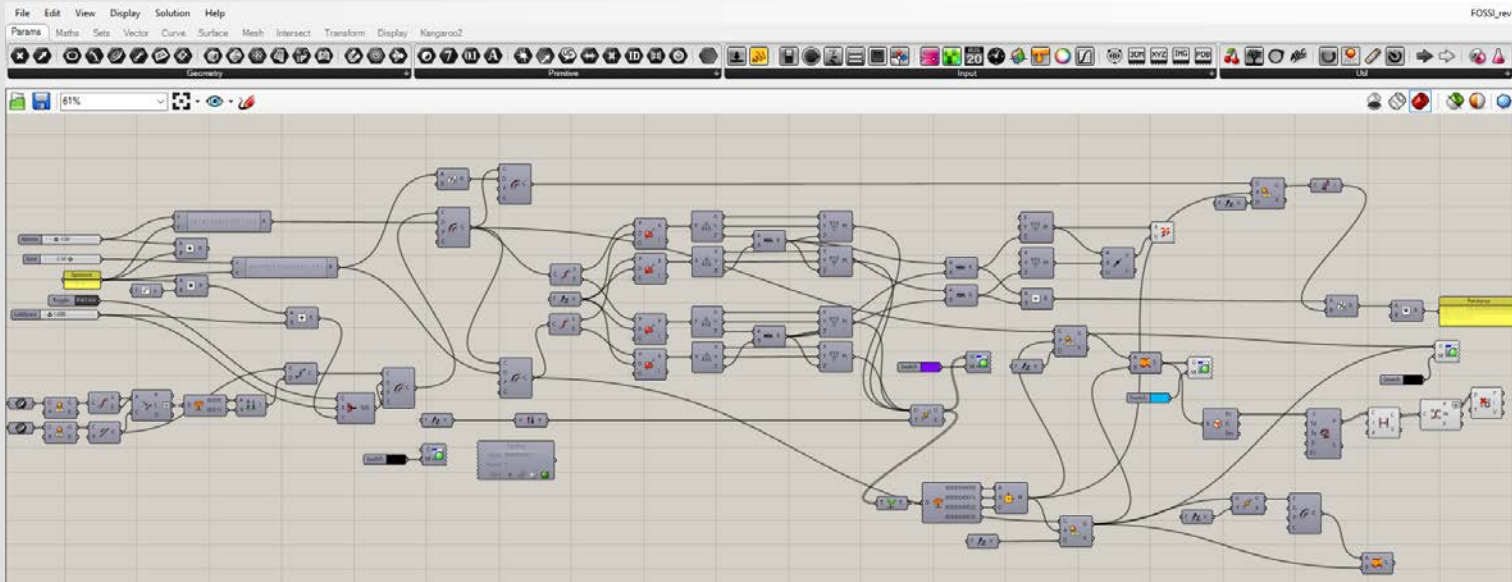
- VERIFICA DELLE INTERFERENZE-



- VERIFICA DELLE INTERFERENZE-



- COMPUTATIONAL DESIGN -



GRAZIE

A TUTTI

DELLA CORTESE ATTENZIONE